
R 914 Compact Litronic

LIEBHERR

Crawler Excavator



Generation
6

Operating weight
14,900 – 17,850 kg

Engine
90 kW / 122 HP
Stage V

Bucket capacity
0.32 – 0.80 m³

Experience the progress R 914 Compact

Maintenance

- Servicing concept, with service points accessible from ground level
- Engine oil level and filling nozzle accessible from ground level
- Standard shut-off valve on hydraulic tank outlet

Compactness

- Short tail swing radius of 1.55 m for increased safety and flexibility on work sites
- The perfect machine for narrow sites – ideal for urban applications and on motorways

Safety

- Panoramic visibility with no obstructions and camera on the rear and the right side equipment for enhanced safety
- Lifiable console for easy and safe access to cab
- ROPS-certified cab structure: rollover protection
- Emergency exit via the rear cab window
- Right window and windshield in laminated and tinted glass





Equipment

- Large choice of types and sizes of equipment
- Longer lifespan of components and higher productivity thanks to automatic centralised lubrication system
- Safety check valves for hoist and stick cylinders
- Large choice of tools and teeth to suit all applications

Engine

- New engine that conforms with the Stage V European exhaust emissions standard
- Automatic idle-stop

Comfort

- Spacious, air-conditioned work space
- Airsprung seat with vertical and horizontal suspension
- Easy-to-use high resolution 7" colour touchscreen
- Completely retractable front cab window

Undercarriage

- Robust, reliable X-frame undercarriage, easy to secure thanks to its integrated eyelets
- Easy maintenance
- Several levelling blades available
- Optional rubber track pads for urban application
- Possibility to anchor the machine with the blade
- Maintenance-free travel gear and track rollers with lifetime lubrication

Technical data



Engine

| | |
|------------------------------|--|
| Rating per ISO 9249 | 90 kW (122 HP) at 1,800 RPM |
| Model | Deutz TCD3.6L4 |
| Type | 4 cylinder in-line |
| Bore | 98 mm |
| Stroke | 120 mm |
| Displacement | 3.6 l |
| Engine operation | 4-stroke diesel Common-Rail injection system Turbo-charged and after-cooler Reduced emissions |
| Exhaust gas treatment | Stage V DOC + DPF + SCR Deutz |
| Air cleaner | Dry-type air cleaner with pre-cleaner, primary and safety elements |
| Fuel tank | 175 l |
| Urea tank | 20 l |
| Electrical system | |
| Voltage | 24 V |
| Batteries | 2 x 135 Ah / 12 V |
| Alternator | Three-phase current 28 V / 80 A |
| Engine idling | Sensor controlled |



Cooling system

| | |
|---------------|--|
| Engine | Water-cooled Compact cooling system consisting cooling unit for water, hydraulic oil and charge air with stepless thermostatically controlled fan, fans for radiator cleaning can be completely folded away |
|---------------|--|



Hydraulic controls

| | |
|-----------------------------|--|
| Power distribution | Via control valves with integrated safety valves, simultaneous and independent actuation of undercarriage, swing drive and equipment |
| Servo circuit | |
| Equipment and swing | With hydraulic pilot control and proportional joystick levers |
| Travel | Electro-proportional via foot pedal |
| Additional functions | Via switch or electro-proportional foot pedals |
| Proportional control | Proportionally acting transmitters on the joysticks for additional hydraulic functions |



Hydraulic system

| | |
|--|---|
| Hydraulic pump | For equipment and travel drive Liebherr axial piston variable displacement pump |
| Max. flow | 300 l/min. |
| Max. pressure | 350 bar |
| Hydraulic pump regulation and control | Liebherr-Synchron-Comfort-system (LSC) with electronic engine speed sensing regulation, pressure and flow compensation, torque controlled swing drive priority |
| Hydraulic tank | 100 l |
| Hydraulic system | max. 230 l |
| Hydraulic oil filter | 1 main return filter with integrated partial micro filtration (5 µm) |
| MODE selection | Adjustment of engine and hydraulic performance via a mode pre-selector to match application, e.g. for especially economical and environmentally friendly operation or for maximum digging performance and heavy-duty jobs |
| S (Sensitive) | Mode for precision work and lifting through very sensitive movements |
| E (Eco) | Mode for especially economical and environmentally friendly operation |
| P (Power) | Mode for high performance with low fuel consumption |
| Engine speed and performance setting | Stepless adjustment of engine output and hydraulic power via engine speed |
| Option | Tool Control: 20 pre-adjustable pump flows and pressures for add-on attachments |



Swing drive

| | |
|----------------------|--|
| Drive | Liebherr axial piston motor with integrated brake valve and torque control |
| Swing ring | Liebherr, sealed race ball bearing swing ring, internal teeth |
| Swing speed | 0 - 10.0 RPM stepless |
| Swing torque | 51 kNm |
| Holding brake | Wet multi-disc (spring applied, pressure released) |


Cab

| | |
|---|--|
| Cab | ROPS safety cab structure (roll-over protection system) with windscreen, totally or partially retractable (only upper part), under cab roof, work headlights integrated in the ceiling, a door with a sliding window (can be opened on both sides), large storing box and several stowing possibilities, shock-absorbing suspension, sound damping insulating, tinted laminated safety glass, separate window shades for the sunroof window and windscreen |
| Operator's seat Standard | Air cushioned operator's seat with 3D-adjustable armrests, headrest, lap belt, seat heater, manual weight adjustment, adjustable seat cushion inclination and length and mechanical lumbar vertebrae support |
| Operator's seat Comfort (Option) | In addition to operator's seat standard: lockable horizontal suspension, automatic weight adjustment, adjustable suspension stiffness, pneumatic lumbar vertebrae support and passive seat climatisation with active coal |
| Operator's seat Premium (Option) | In addition to operator's seat comfort: active electronic weight adjustment (automatic readjustment), pneumatic low frequency suspension and active seat climatisation with active coal and ventilator |
| Arm consoles | Oscillating consoles with seat, tiltable console left |
| Operation and displays | Large high-resolution operating unit, intuitive, colour display with touchscreen, video-compatible, numerous setting, control and monitoring options, e.g. air conditioning control, fuel consumption, machine and attachment parameters |
| Air-conditioning | Automatic air-conditioning, recirculated air function, fast de-icing and demisting at the press of a button, air vents can be operated via a menu. Recirculated air and fresh air filters can be easily replaced and are accessible from the ground level. Heating-cooling unit, designed for extreme outside temperatures, sensors for solar radiation The air conditioning system contains fluorinated greenhouse gases |
| Refrigerant | R134a |
| Global warming potential | 1,430 |
| Quantity at 25 °C* | 1,260 g |
| CO₂ equivalent | 1.80 t |
| Vibration emission** | |
| Hand / arm vibrations | < 2.5 m/s ² , according with ISO 5349-1:2001 |
| Whole-body vibrations | < 0.5 m/s ² |
| Measuring inaccuracy | According with standard EN 12096:1997 |
| Noise emission | |
| ISO 6396 | 70 dB(A) = L _{pA} (inside cab) |
| 2000/14/EC | 100 dB(A) = L _{WA} (surround noise) |

* Valid for standard machine without operator's cab elevation and without height adjustable cab

** For the risk assessment according to 2002/44/EC see ISO/TR 25398:2006


Undercarriage

| | |
|--|--|
| Drive | Liebherr compact planetary reduction gear with Liebherr axial piston motor per side of undercarriage |
| Transmission | Liebherr compact planetary reduction gear |
| Maximum travel speed | 3.1 km/h low range 6.8 km/h high range |
| Drawbar pull on crawler | 154 kN |
| Track components | B4, maintenance-free |
| Track rollers / Carrier rollers | 8 / 2 |
| Tracks | Sealed and greased |
| Track pads | Triple grouser |
| Holding brake | Wet multi-disc (spring applied, pressure released) |
| Brake valves | Integrated into travel motor |
| Lashing eyes | Integrated |

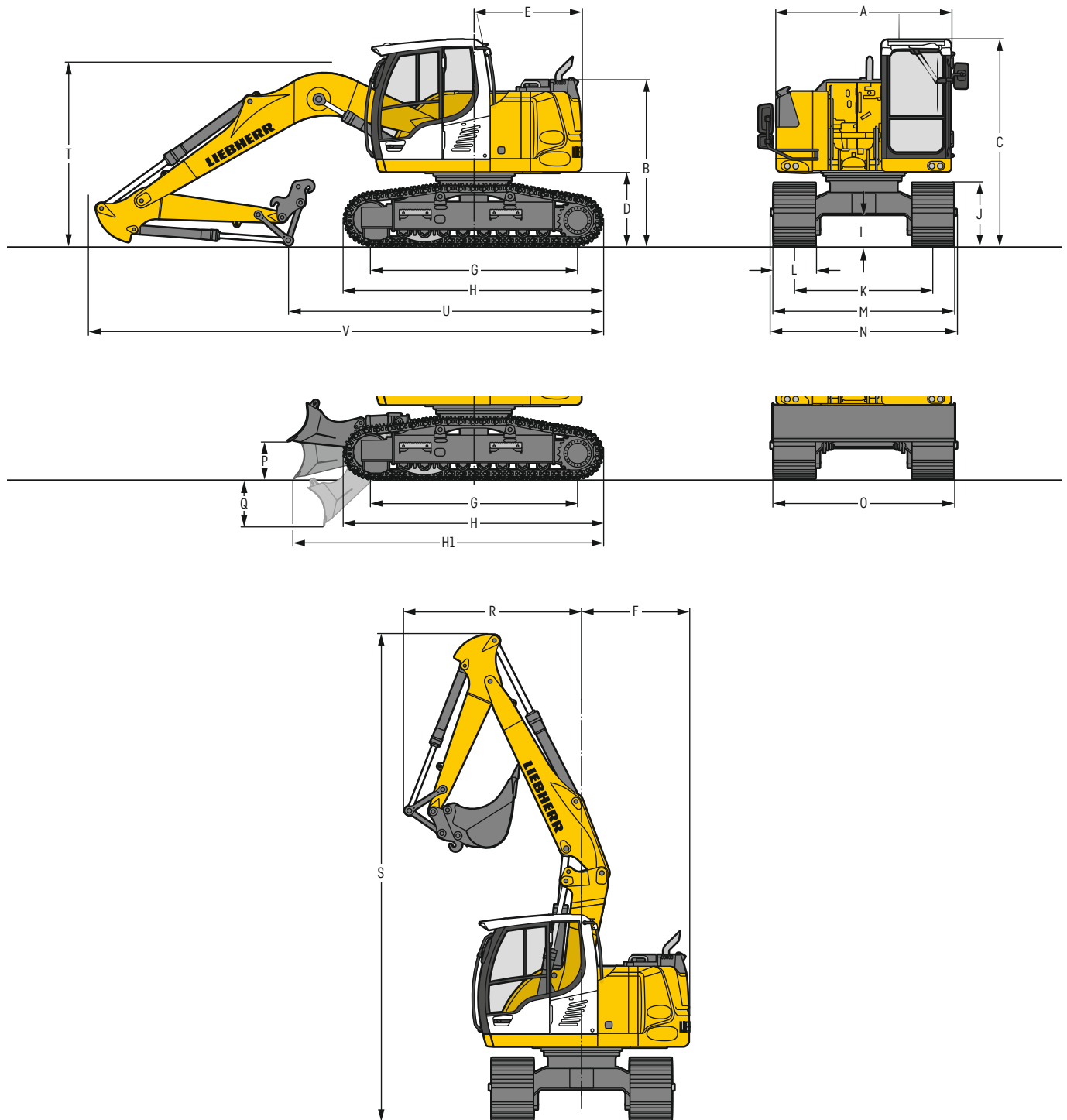

Equipment

| | |
|----------------------------|---|
| Type | High-strength steel plates at highly-stressed points for the toughest requirements. Complex and stable mountings of equipment and cylinders |
| Hydraulic cylinders | Liebherr cylinders with seal and guidance systems |
| Bearings | Sealed, low maintenance |


Complete machine

| | |
|--------------------|--|
| Lubrication | Liebherr central lubrication system for uppercarriage and equipment, automatically |
|--------------------|--|

Dimensions



| | S | mm | S with blade | mm |
|---|----------|--------------------|---------------------|--------------------|
| A Uppercarriage width | | 2,525 | | 2,525 |
| B Uppercarriage height | | 2,395 | | 2,395 |
| C Cab height | | 2,980 | | 2,980 |
| D Counterweight ground clearance | | 1,050 | | 1,050 |
| E Rear-end length | | 1,550 | | 1,550 |
| F Tail swing radius | | 1,550 | | 1,550 |
| G Wheelbase | | 3,000 | | 3,000 |
| H Undercarriage length | | 3,730 | | 3,730 |
| H1 Undercarriage length with blade | | - | | 4,555 |
| I Undercarriage ground clearance | | 450 | | 450 |
| J Track height | | 905 | | 905 |
| K Track gauge | | 2,000 | | 2,000 |
| L Track pad width | | 500 600 700 | | 500 600 700 |
| M Width over tracks | | 2,500 2,600 2,700 | | 2,500 2,600 2,700 |
| N Width over steps | | 2,480 2,480 2,680* | | 2,480 2,480 2,680* |
| O Blade width | | - | | 2,500 2,600 2,700 |
| P Max. blade height | | - | | 550 |
| Q Max. blade depth | | - | | 690 |

* width with removable steps

| | Stick length m | Mono boom 4.60 m with quick coupler mm | Two-piece boom 4.85 m with quick coupler mm | Mono boom offset 4.30 m with quick coupler mm | Two-piece boom offset 4.90 m with quick coupler mm | |
|------------------------------|-----------------------|---|--|--|---|-------|
| R Front swing radius | 2.05 | 2,400 | 2,550 | 2,400 | 2,950 | |
| | 2.25 | 2,200 | 2,450 | 2,200 | 2,800 | |
| | 2.45 | 2,050 | 2,300 | 2,050 | 2,700 | |
| | 2.65 | 2,050 | 2,150 | 2,700 | 2,550 | |
| S Height with boom up | | 6,800 | 7,050 | 6,600 | 7,050 | |
| | T Boom height | 2.05 | 2,650 | 2,700 | 2,450 | 2,700 |
| | | 2.25 | 2,700 | 2,750 | 2,450 | 2,750 |
| | | 2.45 | 2,700 | 2,800 | 2,450 | 2,800 |
| 2.65 | | 2,750 | 2,850 | 2,500 | 2,850 | |
| U Length on ground | 2.05 | 4,550 | 5,100 | 6,550 | 5,000 | |
| | 2.25 | 4,400 | 4,950 | 6,350 | 4,850 | |
| | 2.45 | 4,200 | 4,800 | 6,200 | 4,700 | |
| | 2.65 | 4,000 | 4,650 | 6,050 | 4,550 | |
| V Overall length | 2.05 | 7,450 | 7,800 | 7,150 | 7,800 | |
| | 2.25 | 7,450 | 7,800 | 7,150 | 7,800 | |
| | 2.45 | 7,450 | 7,800 | 7,150 | 7,800 | |
| | 2.65 | 7,450 | 7,800 | 7,150 | 7,800 | |
| Bucket | | 0.50 m ³ | 0.50 m ³ | 0.50 m ³ | 0.50 m ³ | |

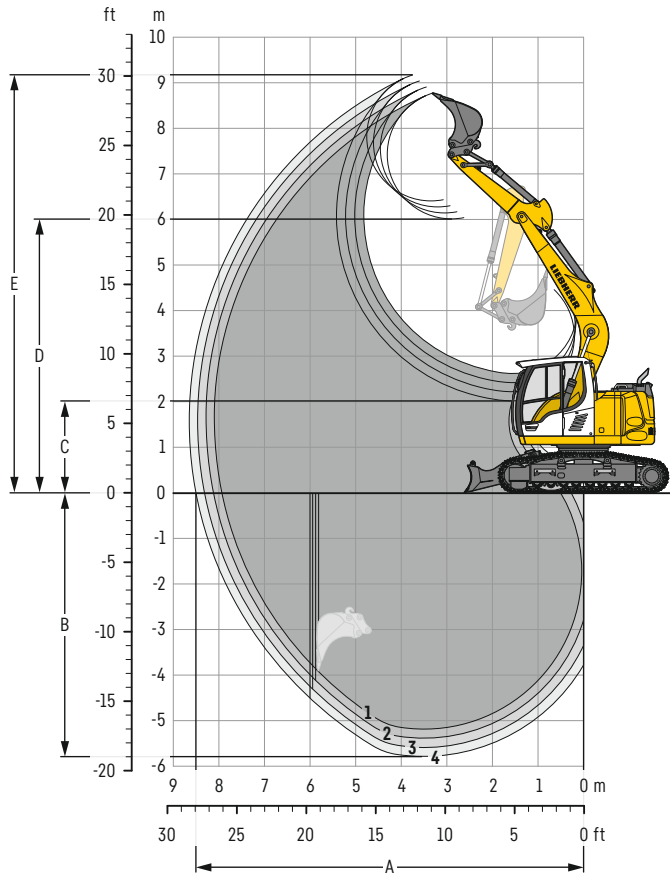
Transport dimensions

removable elements disassembled

| | Stick m | Mono boom 4.60 m mm | | | Two-piece boom 4.85 m mm | | | Mono boom offset 4.30 m mm | | | Two-piece boom offset 4.90 m mm | | |
|------------------|----------------|----------------------------|-------|-------|---------------------------------|-------|-------|-----------------------------------|-------|-------|--|-------|-------|
| Pad width | | 500 | 600 | 700 | 500 | 600 | 700 | 500 | 600 | 700 | 500 | 600 | 700 |
| Transport width | | 2,525 | 2,600 | 2,700 | 2,525 | 2,600 | 2,700 | 2,525 | 2,600 | 2,700 | 2,525 | 2,600 | 2,700 |
| Transport length | 2.05 | | 7,450 | | | 7,800 | | | 7,150 | | | 7,800 | |
| | 2.25 | | 7,450 | | | 7,800 | | | 7,150 | | | 7,800 | |
| | 2.45 | | 7,450 | | | 7,800 | | | 7,150 | | | 7,800 | |
| | 2.65 | | 7,450 | | | 7,800 | | | 7,150 | | | 7,800 | |
| Transport height | 2.05 | | 2,980 | | | 2,980 | | | 2,980 | | | 2,980 | |
| | 2.25 | | 2,980 | | | 2,980 | | | 2,980 | | | 2,980 | |
| | 2.45 | | 2,980 | | | 2,980 | | | 2,980 | | | 2,980 | |
| | 2.65 | | 2,980 | | | 2,980 | | | 2,980 | | | 2,980 | |

Backhoe bucket

with mono boom 4.60 m and counterweight 2.8 t



Digging envelope

| with quick coupler | 1 | 2 | 3 | 4 | |
|------------------------------|---|------|------|------|------|
| Stick length | m | 2.05 | 2.25 | 2.45 | 2.65 |
| A Max. reach at ground level | m | 7.95 | 8.15 | 8.30 | 8.50 |
| B Max. digging depth | m | 5.20 | 5.40 | 5.60 | 5.80 |
| C Min. dumping height | m | 2.60 | 2.40 | 2.20 | 2.00 |
| D Max. dumping height | m | 6.05 | 6.15 | 6.30 | 6.40 |
| E Max. cutting height | m | 8.75 | 8.90 | 9.05 | 9.15 |

Forces

| without quick coupler | 1 | 2 | 3 | 4 | |
|----------------------------------|----|----|----|----|----|
| Stick digging force (ISO 6015) | kN | 70 | 66 | 62 | 59 |
| Bucket digging force (ISO 6015) | kN | 89 | 89 | 89 | 89 |
| Stick digging force (SAE J1179) | kN | 68 | 64 | 60 | 57 |
| Bucket digging force (SAE J1179) | kN | 80 | 80 | 80 | 80 |

Operating weight and ground pressure

The operating weight includes the basic machine with counterweight 2.8 t, mono boom 4.60 m, stick 2.25 m, quick coupler SWA 33 and bucket 0.50 m³ (340 kg).

| Undercarriage | S | | | | |
|-----------------|--------------------|--------|--------|--------|--------|
| Pad width | mm | 500 | 600 | 700 | 900 |
| Weight | kg | 14,900 | 15,100 | 15,350 | 15,750 |
| Ground pressure | kg/cm ² | 0.46 | 0.39 | 0.34 | 0.27 |

| Undercarriage | S with blade | | | | |
|-----------------|--------------------|--------|--------|--------|--------|
| Pad width | mm | 500 | 600 | 700 | 900 |
| Weight | kg | 16,100 | 16,300 | 16,550 | 16,950 |
| Ground pressure | kg/cm ² | 0.49 | 0.42 | 0.36 | 0.29 |

Buckets Machine stability per ISO 10567* (75% of tipping capacity)

| | Cutting width mm | Capacity ISO 7451 m ³ | Weight ³⁾ kg | Weight ⁴⁾ kg | S-Undercarriage (with track pads 600 mm) | | | | | | | | S-Undercarriage with blade (with track pads 600 mm) | | | | | | | |
|-------------------|---------------------|--|----------------------------|----------------------------|---|------|------|------|--------------------|------|------|------|--|------|------|------|--------------------|--|--|--|
| | | | | | Stick length (m) | | | | | | | | Stick length (m) | | | | | | | |
| | | | | | without quick coupler | | | | with quick coupler | | | | without quick coupler | | | | with quick coupler | | | |
| | 2.05 | 2.25 | 2.45 | 2.65 | 2.05 | 2.25 | 2.45 | 2.65 | 2.05 | 2.25 | 2.45 | 2.65 | 2.05 | 2.25 | 2.45 | 2.65 | | | | |
| STD ¹⁾ | 500 | 0.32 | 230 | 250 | ▲ | ▲ | ▲ | ▲ | ▲ | ▲ | ▲ | ▲ | ▲ | ▲ | ▲ | ▲ | ▲ | | | |
| | 550 | 0.29 | 250 | 260 | ▲ | ▲ | ▲ | ▲ | ▲ | ▲ | ▲ | ▲ | ▲ | ▲ | ▲ | ▲ | ▲ | | | |
| | 650 | 0.36 | 270 | 290 | ▲ | ▲ | ▲ | ▲ | ▲ | ▲ | ▲ | ▲ | ▲ | ▲ | ▲ | ▲ | ▲ | | | |
| | 850 | 0.50 | 320 | 340 | ▲ | ▲ | ▲ | ▲ | ▲ | ▲ | ▲ | ▲ | ▲ | ▲ | ▲ | ▲ | ▲ | | | |
| | 1,050 | 0.65 | 360 | 380 | ▲ | ▲ | ▲ | ▲ | ▲ | ▲ | ▲ | ▲ | ▲ | ▲ | ▲ | ▲ | ▲ | | | |
| | 1,250 | 0.80 | 420 | 430 | ■ | ■ | ▲ | ■ | ■ | ▲ | ▲ | ■ | ▲ | ▲ | ■ | ■ | | | | |
| HD ²⁾ | 500 | 0.32 | 260 | 280 | ▲ | ▲ | ▲ | ▲ | ▲ | ▲ | ▲ | ▲ | ▲ | ▲ | ▲ | ▲ | ▲ | | | |
| | 550 | 0.29 | 280 | 290 | ▲ | ▲ | ▲ | ▲ | ▲ | ▲ | ▲ | ▲ | ▲ | ▲ | ▲ | ▲ | ▲ | | | |
| | 650 | 0.36 | 300 | 320 | ▲ | ▲ | ▲ | ▲ | ▲ | ▲ | ▲ | ▲ | ▲ | ▲ | ▲ | ▲ | ▲ | | | |
| | 850 | 0.50 | 360 | 380 | ▲ | ▲ | ▲ | ▲ | ▲ | ▲ | ▲ | ▲ | ▲ | ▲ | ▲ | ▲ | ▲ | | | |
| | 1,050 | 0.65 | 420 | 430 | ▲ | ▲ | ▲ | ▲ | ▲ | ▲ | ▲ | ▲ | ▲ | ▲ | ▲ | ▲ | ▲ | | | |
| | 1,250 | 0.80 | 480 | 490 | ■ | ▲ | ▲ | ■ | ■ | ▲ | ■ | ▲ | ▲ | ▲ | ■ | ■ | | | | |

* Indicated loads are based on ISO 10567, at maximum reach, and may be swung 360° on firm and even ground

¹⁾ Standard bucket with teeth Uni 35-3

²⁾ HD bucket with teeth Uni 35-3

³⁾ Bucket for direct mounting

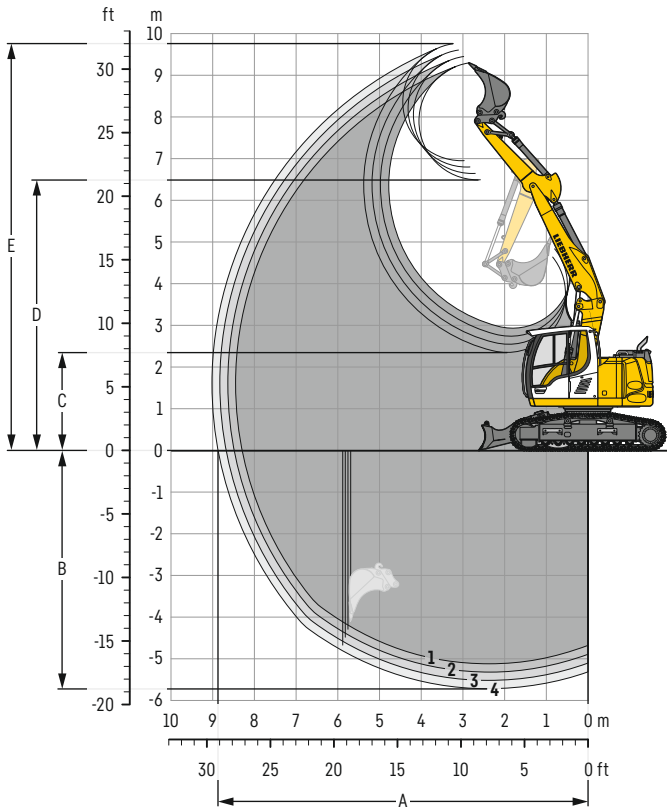
⁴⁾ Bucket for mounting to quick coupler

Other buckets available upon request

Max. material weight ▲ = ≤ 2.0 t/m³, ■ = ≤ 1.8 t/m³, ▲ = ≤ 1.65 t/m³, ■ = ≤ 1.5 t/m³, ▲ = ≤ 1.2 t/m³

Backhoe bucket

with two-piece boom 4.85 m and counterweight 2.8 t



Digging envelope

| with quick coupler | 1 | 2 | 3 | 4 | |
|------------------------------|---|------|------|------|------|
| Stick length | m | 2.05 | 2.25 | 2.45 | 2.65 |
| A Max. reach at ground level | m | 8.30 | 8.50 | 8.70 | 8.90 |
| B Max. digging depth | m | 5.10 | 5.30 | 5.50 | 5.70 |
| C Min. dumping height | m | 2.95 | 2.75 | 2.55 | 2.35 |
| D Max. dumping height | m | 6.50 | 6.65 | 6.80 | 6.95 |
| E Max. cutting height | m | 9.30 | 9.45 | 9.60 | 9.75 |

Forces

| without quick coupler | 1 | 2 | 3 | 4 | |
|----------------------------------|----|----|----|----|----|
| Stick digging force (ISO 6015) | kN | 70 | 66 | 62 | 59 |
| Bucket digging force (ISO 6015) | kN | 89 | 89 | 89 | 89 |
| Stick digging force (SAE J1179) | kN | 68 | 64 | 60 | 57 |
| Bucket digging force (SAE J1179) | kN | 80 | 80 | 80 | 80 |

Operating weight and ground pressure

The operating weight includes the basic machine with counterweight 2.8 t, two-piece boom 4.85 m, stick 2.25 m, quick coupler SWA 33 and bucket 0.50 m³ (340 kg).

| Undercarriage | S | | | | |
|-----------------|--------------------|--------|--------|--------|--------|
| Pad width | mm | 500 | 600 | 700 | 900 |
| Weight | kg | 15,250 | 15,450 | 15,700 | 16,100 |
| Ground pressure | kg/cm ² | 0.47 | 0.40 | 0.35 | 0.28 |

| Undercarriage | S with blade | | | | |
|-----------------|--------------------|--------|--------|--------|--------|
| Pad width | mm | 500 | 600 | 700 | 900 |
| Weight | kg | 16,450 | 16,650 | 16,900 | 17,300 |
| Ground pressure | kg/cm ² | 0.50 | 0.43 | 0.37 | 0.30 |

Buckets Machine stability per ISO 10567* (75% of tipping capacity)

| | Cutting width mm | Capacity ISO 7451 m ³ | Weight ³⁾ kg | Weight ⁴⁾ kg | S-Undercarriage (with track pads 600 mm) | | | | | | | | S-Undercarriage with blade (with track pads 600 mm) | | | | | | | |
|-------------------|---------------------|--|----------------------------|----------------------------|---|------|------|------|--------------------|------|------|------|--|------|------|------|--------------------|--|--|--|
| | | | | | Stick length (m) | | | | Stick length (m) | | | | Stick length (m) | | | | Stick length (m) | | | |
| | | | | | without quick coupler | | | | with quick coupler | | | | without quick coupler | | | | with quick coupler | | | |
| | 2.05 | 2.25 | 2.45 | 2.65 | 2.05 | 2.25 | 2.45 | 2.65 | 2.05 | 2.25 | 2.45 | 2.65 | 2.05 | 2.25 | 2.45 | 2.65 | | | | |
| STD ¹⁾ | 500 | 0.32 | 230 | 250 | ▲ | ▲ | ▲ | ▲ | ▲ | ▲ | ▲ | ▲ | ▲ | ▲ | ▲ | ▲ | ▲ | | | |
| | 550 | 0.29 | 250 | 260 | ▲ | ▲ | ▲ | ▲ | ▲ | ▲ | ▲ | ▲ | ▲ | ▲ | ▲ | ▲ | ▲ | | | |
| | 650 | 0.36 | 270 | 290 | ▲ | ▲ | ▲ | ▲ | ▲ | ▲ | ▲ | ▲ | ▲ | ▲ | ▲ | ▲ | ▲ | | | |
| | 850 | 0.50 | 320 | 340 | ▲ | ▲ | ▲ | ▲ | ▲ | ▲ | ▲ | ▲ | ▲ | ▲ | ▲ | ▲ | ▲ | | | |
| | 1,050 | 0.65 | 360 | 380 | ▲ | ▲ | ■ | ■ | ▲ | ■ | ■ | ▲ | ▲ | ▲ | ▲ | ▲ | ▲ | | | |
| | 1,250 | 0.80 | 420 | 430 | ▲ | ■ | ■ | △ | ▲ | ■ | △ | △ | ▲ | ■ | ■ | ▲ | ▲ | | | |
| HD ²⁾ | 500 | 0.32 | 260 | 280 | ▲ | ▲ | ▲ | ▲ | ▲ | ▲ | ▲ | ▲ | ▲ | ▲ | ▲ | ▲ | ▲ | | | |
| | 550 | 0.29 | 280 | 290 | ▲ | ▲ | ▲ | ▲ | ▲ | ▲ | ▲ | ▲ | ▲ | ▲ | ▲ | ▲ | ▲ | | | |
| | 650 | 0.36 | 300 | 320 | ▲ | ▲ | ▲ | ▲ | ▲ | ▲ | ▲ | ▲ | ▲ | ▲ | ▲ | ▲ | ▲ | | | |
| | 850 | 0.50 | 360 | 380 | ▲ | ▲ | ▲ | ▲ | ▲ | ▲ | ▲ | ▲ | ▲ | ▲ | ▲ | ▲ | ▲ | | | |
| | 1,050 | 0.65 | 420 | 430 | ▲ | ▲ | ■ | ▲ | ▲ | ■ | ▲ | ▲ | ▲ | ▲ | ▲ | ▲ | ▲ | | | |
| | 1,250 | 0.80 | 480 | 490 | ▲ | ■ | △ | △ | ■ | △ | △ | △ | ▲ | ■ | ■ | ▲ | ■ | | | |

* Indicated loads are based on ISO 10567, at maximum reach, and may be swung 360° on firm and even ground

¹⁾ Standard bucket with teeth Uni 35-3

²⁾ HD bucket with teeth Uni 35-3

³⁾ Bucket for direct mounting

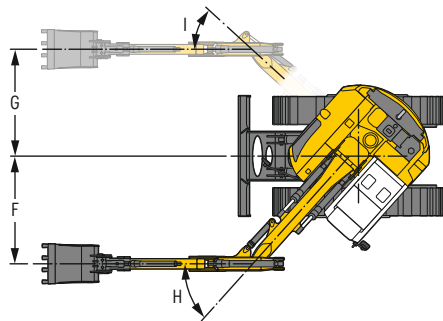
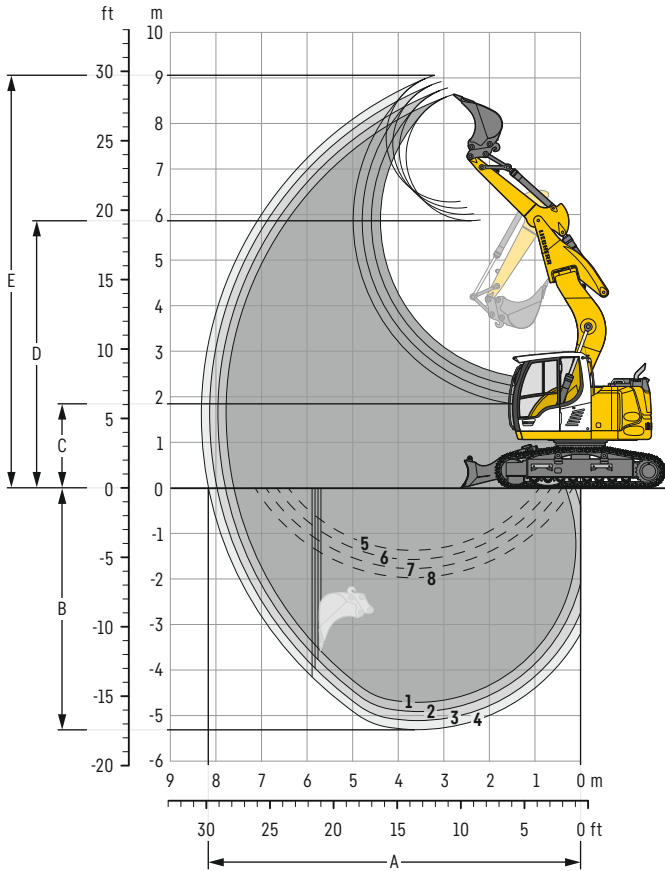
⁴⁾ Bucket for mounting to quick coupler

Other buckets available upon request

Max. material weight ▲ = ≤ 2.0 t/m³, ■ = ≤ 1.8 t/m³, ▲ = ≤ 1.65 t/m³, ■ = ≤ 1.5 t/m³, △ = ≤ 1.2 t/m³

Backhoe bucket

with mono boom offset 4.30 m and counterweight 2.8 t



Digging envelope

| with quick coupler | | 1 | 2 | 3 | 4 |
|------------------------------|---|------|------|------|------|
| Stick length | m | 2.05 | 2.25 | 2.45 | 2.65 |
| A Max. reach at ground level | m | 7.60 | 7.80 | 8.00 | 8.15 |
| B Max. digging depth | m | 4.70 | 4.90 | 5.10 | 5.30 |
| C Min. dumping height | m | 2.40 | 2.20 | 2.00 | 1.80 |
| D Max. dumping height | m | 5.90 | 6.00 | 6.15 | 6.30 |
| E Max. cutting height | m | 8.65 | 8.80 | 8.90 | 9.05 |
| F Max. offset right | m | 2.37 | | | |
| G Max. offset left | m | 2.35 | | | |
| H Max. offset angle right | ° | 48 | | | |
| I Max. offset angle left | ° | 42.5 | | | |

- 1 with stick 2.05 m
- 2 with stick 2.25 m
- 3 with stick 2.45 m
- 4 with stick 2.65 m
- with set straight boom
- 5 with stick 2.05 m
- 6 with stick 2.25 m
- 7 with stick 2.45 m
- 8 with stick 2.65 m
- at max. equipment offset with vertical ditch walls

Forces

| without quick coupler | | 1 | 2 | 3 | 4 |
|----------------------------------|----|----|----|----|----|
| Stick digging force (ISO 6015) | kN | 70 | 66 | 62 | 59 |
| Bucket digging force (ISO 6015) | kN | 89 | 89 | 89 | 89 |
| Stick digging force (SAE J1179) | kN | 68 | 64 | 60 | 57 |
| Bucket digging force (SAE J1179) | kN | 80 | 80 | 80 | 80 |

Operating weight and ground pressure

The operating weight includes the basic machine with counterweight 2.8 t, mono boom offset 4.30 m, stick 2.25 m, quick coupler SWA 33 and bucket 0.50 m³ (340 kg).

| Undercarriage | | S | | | |
|-----------------|--------------------|--------|--------|--------|--------|
| Pad width | mm | 500 | 600 | 700 | 900 |
| Weight | kg | 15,200 | 15,400 | 15,650 | 16,050 |
| Ground pressure | kg/cm ² | 0.47 | 0.40 | 0.35 | 0.28 |

| Undercarriage | | S with blade | | | |
|-----------------|--------------------|--------------|--------|--------|--------|
| Pad width | mm | 500 | 600 | 700 | 900 |
| Weight | kg | 16,400 | 16,600 | 16,850 | 17,250 |
| Ground pressure | kg/cm ² | 0.50 | 0.43 | 0.37 | 0.30 |

Buckets Machine stability per ISO 10567* (75% of tipping capacity)

| | Cutting width mm | Capacity ISO 7451 m ³ | Weight ³⁾ kg | Weight ⁴⁾ kg | S-Undercarriage (with track pads 600 mm) | | | | | | | | S-Undercarriage with blade (with track pads 600 mm) | | | | | | | |
|-------------------|---------------------|--|----------------------------|----------------------------|---|------|------|------|--------------------|------|------|------|--|------|------|------|--------------------|--|--|--|
| | | | | | Stick length (m) | | | | | | | | Stick length (m) | | | | | | | |
| | | | | | without quick coupler | | | | with quick coupler | | | | without quick coupler | | | | with quick coupler | | | |
| | 2.05 | 2.25 | 2.45 | 2.65 | 2.05 | 2.25 | 2.45 | 2.65 | 2.05 | 2.25 | 2.45 | 2.65 | 2.05 | 2.25 | 2.45 | 2.65 | | | | |
| STD ¹⁾ | 500 | 0.32 | 230 | 250 | ▲ | ▲ | ▲ | ▲ | ▲ | ▲ | ▲ | ▲ | ▲ | ▲ | ▲ | ▲ | ▲ | | | |
| | 550 | 0.29 | 250 | 260 | ▲ | ▲ | ▲ | ▲ | ▲ | ▲ | ▲ | ▲ | ▲ | ▲ | ▲ | ▲ | ▲ | | | |
| | 650 | 0.36 | 270 | 290 | ▲ | ▲ | ▲ | ▲ | ▲ | ▲ | ▲ | ▲ | ▲ | ▲ | ▲ | ▲ | ▲ | | | |
| | 850 | 0.50 | 320 | 340 | ▲ | ▲ | ▲ | ▲ | ▲ | ▲ | ▲ | ▲ | ▲ | ▲ | ▲ | ▲ | ▲ | | | |
| | 1,050 | 0.65 | 360 | 380 | ▲ | ▲ | ▲ | ▲ | ▲ | ▲ | ▲ | ▲ | ▲ | ▲ | ▲ | ▲ | ▲ | | | |
| | 1,250 | 0.80 | 420 | 430 | ▲ | ■ | ■ | ▲ | ■ | ■ | ▲ | ■ | ▲ | ▲ | ▲ | ▲ | ■ | | | |
| HD ²⁾ | 500 | 0.32 | 260 | 280 | ▲ | ▲ | ▲ | ▲ | ▲ | ▲ | ▲ | ▲ | ▲ | ▲ | ▲ | ▲ | ▲ | | | |
| | 550 | 0.29 | 280 | 290 | ▲ | ▲ | ▲ | ▲ | ▲ | ▲ | ▲ | ▲ | ▲ | ▲ | ▲ | ▲ | ▲ | | | |
| | 650 | 0.36 | 300 | 320 | ▲ | ▲ | ▲ | ▲ | ▲ | ▲ | ▲ | ▲ | ▲ | ▲ | ▲ | ▲ | ▲ | | | |
| | 850 | 0.50 | 360 | 380 | ▲ | ▲ | ▲ | ▲ | ▲ | ▲ | ▲ | ▲ | ▲ | ▲ | ▲ | ▲ | ▲ | | | |
| | 1,050 | 0.65 | 420 | 430 | ▲ | ▲ | ▲ | ▲ | ▲ | ▲ | ▲ | ▲ | ▲ | ▲ | ▲ | ▲ | ▲ | | | |
| | 1,250 | 0.80 | 480 | 490 | ■ | ■ | ▲ | ■ | ■ | ▲ | ▲ | ■ | ▲ | ▲ | ▲ | ▲ | ■ | | | |

* Indicated loads are based on ISO 10567, at maximum reach, and may be swung 360° on firm and even ground

¹⁾ Standard bucket with teeth Uni 35-3

²⁾ HD bucket with teeth Uni 35-3

³⁾ Bucket for direct mounting

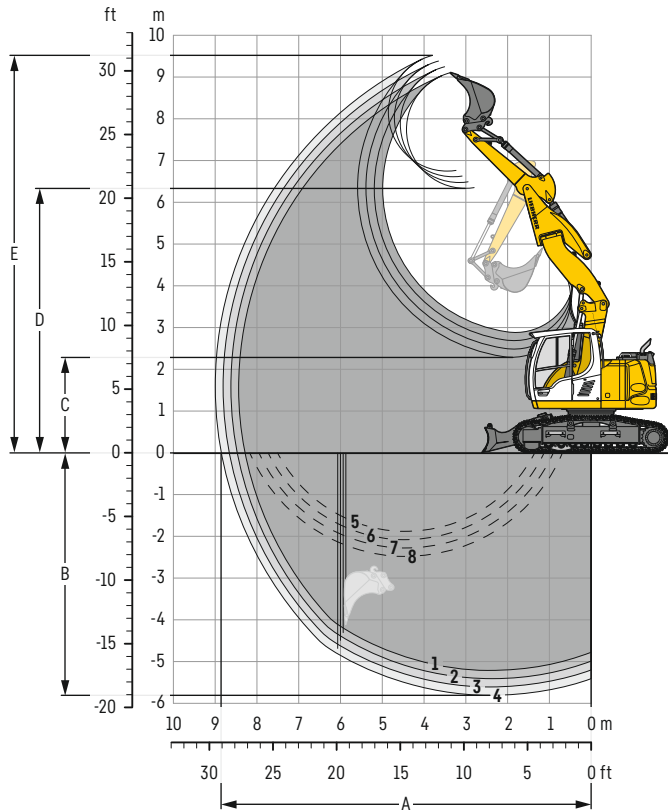
⁴⁾ Bucket for mounting to quick coupler

Other buckets available upon request

Max. material weight ▲ = ≤ 2.0 t/m³, ■ = ≤ 1.8 t/m³, ▲ = ≤ 1.65 t/m³, ■ = ≤ 1.5 t/m³

Backhoe bucket

with two-piece boom offset 4.90 m and counterweight 2.8 t



Digging envelope

| with quick coupler | | 1 | 2 | 3 | 4 |
|------------------------------|---|------|------|------|------|
| Stick length | m | 2.05 | 2.25 | 2.45 | 2.65 |
| A Max. reach at ground level | m | 8.25 | 8.45 | 8.65 | 8.85 |
| B Max. digging depth | m | 5.20 | 5.40 | 5.60 | 5.80 |
| C Min. dumping height | m | 2.90 | 2.70 | 2.50 | 2.30 |
| D Max. dumping height | m | 6.35 | 6.50 | 6.60 | 6.75 |
| E Max. cutting height | m | 9.10 | 9.25 | 9.40 | 9.50 |
| F Max. offset right | m | 2.37 | | | |
| G Max. offset left | m | 2.34 | | | |
| H Max. offset angle right | ° | 39.5 | | | |
| I Max. offset angle left | ° | 34.5 | | | |

- 1 with stick 2.05 m
- 2 with stick 2.25 m
- 3 with stick 2.45 m
- 4 with stick 2.65 m
- with set straight boom
- 5 with stick 2.05 m
- 6 with stick 2.25 m
- 7 with stick 2.45 m
- 8 with stick 2.65 m
- at max. equipment offset with vertical ditch walls

Forces

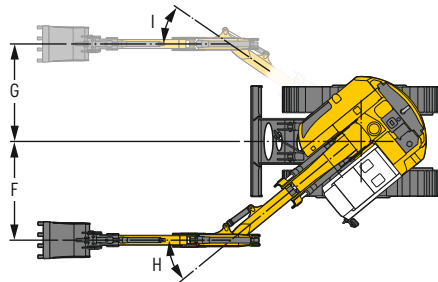
| without quick coupler | | 1 | 2 | 3 | 4 |
|----------------------------------|----|----|----|----|----|
| Stick digging force (ISO 6015) | kN | 70 | 66 | 62 | 59 |
| Bucket digging force (ISO 6015) | kN | 89 | 89 | 89 | 89 |
| Stick digging force (SAE J1179) | kN | 68 | 64 | 60 | 57 |
| Bucket digging force (SAE J1179) | kN | 80 | 80 | 80 | 80 |

Operating weight and ground pressure

The operating weight includes the basic machine with counterweight 2.8 t, two-piece boom offset 4.90 m, stick 2.25 m, quick coupler SWA 33 and bucket 0.50 m³ (340 kg).

| Undercarriage | S | | | | |
|-----------------|--------------------|--------|--------|--------|--------|
| Pad width | mm | 500 | 600 | 700 | 900 |
| Weight | kg | 15,800 | 16,000 | 16,250 | 16,650 |
| Ground pressure | kg/cm ² | 0.49 | 0.41 | 0.36 | 0.29 |

| Undercarriage | S with blade | | | | |
|-----------------|--------------------|--------|--------|--------|--------|
| Pad width | mm | 500 | 600 | 700 | 900 |
| Weight | kg | 17,000 | 17,200 | 17,450 | 17,850 |
| Ground pressure | kg/cm ² | 0.52 | 0.44 | 0.38 | 0.31 |



Buckets Machine stability per ISO 10567* (75% of tipping capacity)

| | Cutting width mm | Capacity ISO 7451 m ³ | Weight ³⁾ kg | Weight ⁴⁾ kg | S-Undercarriage (with track pads 600 mm) | | | | | | | | S-Undercarriage with blade (with track pads 600 mm) | | | | | | | |
|-------------------|---------------------|--|----------------------------|----------------------------|---|------|------|------|--------------------|------|------|------|--|------|------|------|--------------------|------|------|------|
| | | | | | Stick length (m) | | | | | | | | Stick length (m) | | | | | | | |
| | | | | | without quick coupler | | | | with quick coupler | | | | without quick coupler | | | | with quick coupler | | | |
| | | | | | 2.05 | 2.25 | 2.45 | 2.65 | 2.05 | 2.25 | 2.45 | 2.65 | 2.05 | 2.25 | 2.45 | 2.65 | 2.05 | 2.25 | 2.45 | 2.65 |
| STD ¹⁾ | 500 | 0.32 | 230 | 250 | ▲ | ▲ | ▲ | ▲ | ▲ | ▲ | ▲ | ▲ | ▲ | ▲ | ▲ | ▲ | ▲ | ▲ | ▲ | ▲ |
| | 550 | 0.29 | 250 | 260 | ▲ | ▲ | ▲ | ▲ | ▲ | ▲ | ▲ | ▲ | ▲ | ▲ | ▲ | ▲ | ▲ | ▲ | ▲ | ▲ |
| | 650 | 0.36 | 270 | 290 | ▲ | ▲ | ▲ | ▲ | ▲ | ▲ | ▲ | ▲ | ▲ | ▲ | ▲ | ▲ | ▲ | ▲ | ▲ | ▲ |
| | 850 | 0.50 | 320 | 340 | ▲ | ▲ | ▲ | ▲ | ▲ | ▲ | ▲ | ▲ | ▲ | ▲ | ▲ | ▲ | ▲ | ▲ | ▲ | ▲ |
| | 1,050 | 0.65 | 360 | 380 | ■ | ■ | ▲ | ■ | ■ | ▲ | ■ | ▲ | ■ | ■ | ▲ | ▲ | ▲ | ▲ | ■ | ■ |
| 1,250 | 0.80 | 420 | 430 | ■ | △ | △ | △ | △ | △ | △ | △ | - | ■ | ▲ | ▲ | ■ | ▲ | ▲ | △ | |
| HD ²⁾ | 500 | 0.32 | 260 | 280 | ▲ | ▲ | ▲ | ▲ | ▲ | ▲ | ▲ | ▲ | ▲ | ▲ | ▲ | ▲ | ▲ | ▲ | ▲ | ▲ |
| | 550 | 0.29 | 280 | 290 | ▲ | ▲ | ▲ | ▲ | ▲ | ▲ | ▲ | ▲ | ▲ | ▲ | ▲ | ▲ | ▲ | ▲ | ▲ | ▲ |
| | 650 | 0.36 | 300 | 320 | ▲ | ▲ | ▲ | ▲ | ▲ | ▲ | ▲ | ▲ | ▲ | ▲ | ▲ | ▲ | ▲ | ▲ | ▲ | ▲ |
| | 850 | 0.50 | 360 | 380 | ▲ | ▲ | ▲ | ▲ | ▲ | ▲ | ▲ | ▲ | ■ | ▲ | ▲ | ▲ | ▲ | ▲ | ▲ | ▲ |
| | 1,050 | 0.65 | 420 | 430 | ■ | ▲ | ▲ | ■ | ▲ | ▲ | ■ | ▲ | ▲ | ■ | ▲ | ▲ | ▲ | ■ | ■ | ■ |
| 1,250 | 0.80 | 480 | 490 | △ | △ | △ | △ | △ | △ | - | - | ▲ | ▲ | ■ | ■ | ▲ | ■ | ■ | △ | |

* Indicated loads are based on ISO 10567, at maximum reach, and may be swung 360° on firm and even ground

¹⁾ Standard bucket with teeth Uni 35-3

²⁾ HD bucket with teeth Uni 35-3

³⁾ Bucket for direct mounting

⁴⁾ Bucket for mounting to quick coupler

Other buckets available upon request

Max. material weight ▲ = ≤ 2.0 t/m³, ■ = ≤ 1.8 t/m³, ▲ = ≤ 1.65 t/m³, ■ = ≤ 1.5 t/m³, △ = ≤ 1.2 t/m³, - = not authorised

Lift capacities

with mono boom 4.60 m, counterweight 2.8 t and track pads 600 mm

Stick 2.05 m

| Under-carriage | 3.0 m | | 4.5 m | | 6.0 m | | 7.5 m | | m |
|----------------|--------|----------------------------|--------|----------------------------|--------|----------------------------|--------|----------------------------|------|
| | Height | Can be slewed through 360° | Height | Can be slewed through 360° | Height | Can be slewed through 360° | Height | Can be slewed through 360° | |
| S | 7.5 | | | | | | | | |
| | 6.0 | | | | | | | | |
| | 4.5 | 5.2* | 5.2* | 3.7 | 4.4* | | | 2.7* | 2.7* |
| | 3.0 | 6.4 | 8.0* | 3.5 | 5.3* | 2.3 | 3.5 | 2.0 | 2.6* |
| | 1.5 | | | 3.2 | 5.2 | 2.2 | 3.4 | 1.8 | 2.8* |
| | 0 | 5.5 | 6.1* | 3.1 | 5.1 | 2.1 | 3.3 | 1.9 | 3.0 |
| | -1.5 | 5.6 | 9.2* | 3.0 | 5.0 | | | 2.1 | 3.4 |
| Blade up | 7.5 | | | | | | | | |
| | 6.0 | | | 4.0 | 4.1* | | | 2.7* | 2.7* |
| | 4.5 | 5.2* | 5.2* | 4.0 | 4.4* | | | 2.5 | 2.6* |
| | 3.0 | 6.9 | 8.0* | 3.8 | 5.3* | 2.5 | 3.6 | 2.2 | 2.6* |
| | 1.5 | | | 3.5 | 5.3 | 2.4 | 3.5 | 2.0 | 2.8* |
| | 0 | 6.0 | 6.1* | 3.4 | 5.1 | 2.3 | 3.4 | 2.1 | 3.0 |
| | -1.5 | 6.0 | 9.2* | 3.3 | 5.1 | | | 2.3 | 3.4 |
| Blade down | 7.5 | | | | | | | | |
| | 6.0 | | | 4.1* | 4.1* | | | 2.7* | 2.7* |
| | 4.5 | 5.2* | 5.2* | 4.2 | 4.4* | | | 2.6* | 2.6* |
| | 3.0 | 7.3 | 8.0* | 4.0 | 5.3* | 2.6 | 4.4* | 2.3 | 2.6* |
| | 1.5 | | | 3.7 | 6.2* | 2.5 | 4.7* | 2.1 | 2.8* |
| | 0 | 6.1* | 6.1* | 3.6 | 6.6* | 2.4 | 4.9* | 2.2 | 3.3* |
| | -1.5 | 6.5 | 9.2* | 3.5 | 6.3* | | | 2.5 | 4.4* |

Stick 2.25 m

| Under-carriage | 3.0 m | | 4.5 m | | 6.0 m | | 7.5 m | | m |
|----------------|--------|----------------------------|--------|----------------------------|--------|----------------------------|--------|----------------------------|------|
| | Height | Can be slewed through 360° | Height | Can be slewed through 360° | Height | Can be slewed through 360° | Height | Can be slewed through 360° | |
| S | 7.5 | | | | | | | | 3.1* |
| | 6.0 | | | | | | | | 3.1* |
| | 4.5 | 4.8* | 4.8* | 3.7 | 4.2* | 2.3 | 3.2* | 2.2 | 2.3* |
| | 3.0 | 6.5 | 7.6* | 3.5 | 5.1* | 2.3 | 3.5 | 1.9 | 2.3* |
| | 1.5 | 5.3* | 5.3* | 3.2 | 5.2 | 2.2 | 3.4 | 1.8 | 2.5* |
| | 0 | 5.5 | 6.3* | 3.1 | 5.0 | 2.1 | 3.3 | 1.8 | 2.8 |
| | -1.5 | 5.5 | 9.4* | 3.0 | 5.0 | 2.1 | 3.3 | 2.0 | 3.2 |
| Blade up | 7.5 | | | | | | | | 3.1* |
| | 6.0 | | | 4.0* | 4.0* | | | 2.4* | 2.4* |
| | 4.5 | 4.8* | 4.8* | 4.0 | 4.2* | 2.5 | 3.2* | 2.3* | 2.3* |
| | 3.0 | 6.9 | 7.6* | 3.8 | 5.1* | 2.5 | 3.6 | 2.1 | 2.3* |
| | 1.5 | 5.3* | 5.3* | 3.5 | 5.3 | 2.4 | 3.4 | 1.9 | 2.5* |
| | 0 | 6.0 | 6.3* | 3.3 | 5.1 | 2.3 | 3.4 | 2.0 | 2.9 |
| | -1.5 | 6.0 | 9.4* | 3.3 | 5.1 | 2.2 | 3.3 | 2.2 | 3.3 |
| Blade down | 7.5 | | | | | | | | 3.1* |
| | 6.0 | | | 4.0* | 4.0* | | | 2.4* | 2.4* |
| | 4.5 | 4.8* | 4.8* | 4.2 | 4.2* | 2.7 | 3.2* | 2.3* | 2.3* |
| | 3.0 | 7.4 | 7.6* | 4.0 | 5.1* | 2.6 | 4.2* | 2.2 | 2.3* |
| | 1.5 | 5.3* | 5.3* | 3.7 | 6.1* | 2.5 | 4.6* | 2.0 | 2.5* |
| | 0 | 6.3* | 6.3* | 3.5 | 6.6* | 2.4 | 4.8* | 2.1 | 2.9* |
| | -1.5 | 6.4 | 9.4* | 3.5 | 6.4* | 2.4 | 4.5* | 2.3 | 3.8* |

Stick 2.45 m

| Under-carriage | 3.0 m | | 4.5 m | | 6.0 m | | 7.5 m | | m |
|----------------|--------|----------------------------|--------|----------------------------|--------|----------------------------|--------|----------------------------|------|
| | Height | Can be slewed through 360° | Height | Can be slewed through 360° | Height | Can be slewed through 360° | Height | Can be slewed through 360° | |
| S | 7.5 | | | | | | | | 2.7* |
| | 6.0 | | | | | | | | 2.7* |
| | 4.5 | | | 3.7* | 3.7* | | | 2.2* | 2.2* |
| | 3.0 | 6.6 | 7.1* | 3.5 | 4.9* | 2.3 | 3.5 | 1.8 | 2.1* |
| | 1.5 | 5.7 | 6.5* | 3.2 | 5.2 | 2.1 | 3.4 | 1.7 | 2.3* |
| | 0 | 5.5 | 6.5* | 3.0 | 5.0 | 2.1 | 3.3 | 1.7 | 2.6* |
| | -1.5 | 5.4 | 9.6* | 3.0 | 5.0 | 2.0 | 3.3 | 1.9 | 3.0 |
| Blade up | 7.5 | | | | | | | | 2.7* |
| | 6.0 | | | 3.7* | 3.7* | | | 2.2* | 2.2* |
| | 4.5 | | | 4.0 | 4.0* | 2.5 | 3.4* | 2.1* | 2.1* |
| | 3.0 | 7.0 | 7.1* | 3.8 | 4.9* | 2.5 | 3.6 | 2.0 | 2.1* |
| | 1.5 | 6.2 | 6.5* | 3.5 | 5.3 | 2.3 | 3.4 | 1.8 | 2.3* |
| | 0 | 6.0 | 6.5* | 3.3 | 5.1 | 2.2 | 3.3 | 1.9 | 2.6* |
| | -1.5 | 5.9 | 9.6* | 3.3 | 5.0 | 2.2 | 3.3 | 2.1 | 3.1 |
| Blade down | 7.5 | | | | | | | | 2.7* |
| | 6.0 | | | 3.7* | 3.7* | | | 2.2* | 2.2* |
| | 4.5 | | | 4.0* | 4.0* | 2.7 | 3.4* | 2.1* | 2.1* |
| | 3.0 | 7.1* | 7.1* | 4.0 | 4.9* | 2.6 | 4.1* | 2.1 | 2.1* |
| | 1.5 | 6.5* | 6.5* | 3.7 | 6.0* | 2.5 | 4.5* | 1.9 | 2.3* |
| | 0 | 6.4 | 6.5* | 3.5 | 6.5* | 2.4 | 4.8* | 2.0 | 2.6* |
| | -1.5 | 6.4 | 9.6* | 3.5 | 6.4* | 2.3 | 4.6* | 2.2 | 3.3* |

Stick 2.65 m

| Under-carriage | 3.0 m | | 4.5 m | | 6.0 m | | 7.5 m | | m |
|----------------|--------|----------------------------|--------|----------------------------|--------|----------------------------|--------|----------------------------|------|
| | Height | Can be slewed through 360° | Height | Can be slewed through 360° | Height | Can be slewed through 360° | Height | Can be slewed through 360° | |
| S | 7.5 | | | | | | | | 2.4* |
| | 6.0 | | | | | | | | 2.4* |
| | 4.5 | | | 3.5* | 3.5* | | | 2.0* | 2.0* |
| | 3.0 | 6.6* | 6.6* | 3.5 | 4.7* | 2.4 | 3.4* | 1.9* | 1.9* |
| | 1.5 | 5.8 | 7.8* | 3.2 | 5.3 | 2.1 | 3.4 | 1.7 | 1.9* |
| | 0 | 5.4 | 6.6* | 3.0 | 5.0 | 2.0 | 3.3 | 1.6 | 2.1* |
| | -1.5 | 5.4 | 9.2* | 3.0 | 4.9 | 2.0 | 3.2 | 1.8 | 2.9 |
| Blade up | 7.5 | | | | | | | | 2.4* |
| | 6.0 | | | 3.5* | 3.5* | | | 2.0* | 2.0* |
| | 4.5 | | | 3.8* | 3.8* | 2.5 | 3.4* | 1.9* | 1.9* |
| | 3.0 | 6.6* | 6.6* | 3.8 | 4.7* | 2.5 | 3.6 | 1.9 | 1.9* |
| | 1.5 | 6.3 | 7.8* | 3.5 | 5.3 | 2.3 | 3.4 | 1.8 | 2.1* |
| | 0 | 5.9 | 6.6* | 3.3 | 5.1 | 2.2 | 3.3 | 1.8 | 2.4* |
| | -1.5 | 5.9 | 9.2* | 3.2 | 5.0 | 2.2 | 3.3 | 2.0 | 2.9 |
| Blade down | 7.5 | | | | | | | | 2.4* |
| | 6.0 | | | 3.5* | 3.5* | | | 2.0* | 2.0* |
| | 4.5 | | | 3.8* | 3.8* | 2.7 | 3.4* | 1.9* | 1.9* |
| | 3.0 | 6.6* | 6.6* | 4.0 | 4.7* | 2.6 | 4.0* | 1.9* | 1.9* |
| | 1.5 | 6.7 | 7.8* | 3.7 | 5.8* | 2.5 | 4.4* | 1.9 | 2.1* |
| | 0 | 6.4 | 6.6* | 3.5 | 6.5* | 2.4 | 4.7* | 1.9 | 2.4* |
| | -1.5 | 6.3 | 9.2* | 3.4 | 6.4* | 2.3 | 4.6* | 2.1 | 3.0* |

Height Can be slewed through 360° In longitudinal position of undercarriage Max. reach * Limited by hydr. capacity

The load values are quoted in tons (t) at stick end (without bucket), and may be swung 360° on firm and even ground. Adjacent values are valid for the undercarriage when in the longitudinal position. Capacities are valid for 600 mm wide track pads. Indicated loads are based on ISO 10567 standard and do not exceed 75% of tipping or 87% of hydraulic capacity (indicated via *). Without bucket cylinder, link and lever the lift capacities will increase by 186 kg. Lifting capacity of the excavator is limited by machine stability and hydraulic capacity.

According to European Standard, EN 474-5: In the European Union excavators have to be equipped with an overload warning device, a load diagram and automatic safety check valves on hoist cylinders and stick cylinder(s), when they are used for lifting operations which require the use of lifting accessories.

Determine maximum load lift from load lift chart displayed in the operator's cab or from load lift chart detailed in the operator's manual supplied with the machine.

Lift capacities

with two-piece boom 4.85 m, counterweight 2.8 t and track pads 600 mm

Stick 2.05 m

| Under-carriage | 3.0 m | | 4.5 m | | 6.0 m | | 7.5 m | | m |
|----------------|-------|------|-------|-----|-------|-----|-------|--|------|
| | | | | | | | | | |
| S | 7.5 | | | | | | | | 3.5* |
| | 6.0 | | | | | | | | 3.5* |
| | 4.5 | 6.7* | 6.7* | 3.9 | 4.9* | 2.4 | 3.6 | | 2.8* |
| | 3.0 | 6.8 | 9.2* | 3.8 | 5.6 | 2.4 | 3.6 | | 2.8* |
| | 1.5 | 6.7 | 9.6* | 3.8 | 5.6 | 2.3 | 3.5 | | 2.1 |
| | 0 | 6.5 | 10.5* | 3.5 | 5.6 | 2.2 | 3.4 | | 2.6* |
| | -1.5 | 6.2 | 10.7* | 3.3 | 5.3 | 2.1 | 3.3 | | 2.7 |
| Blade up | 7.5 | | | | | | | | 3.5* |
| | 6.0 | | | 4.1 | 4.9* | | | | 3.5* |
| | 4.5 | 6.7* | 6.7* | 4.1 | 5.3* | 2.5 | 3.7 | | 2.8* |
| | 3.0 | 7.2 | 9.2* | 4.1 | 5.7 | 2.5 | 3.7 | | 2.8* |
| | 1.5 | 7.1 | 9.6* | 4.1 | 5.6 | 2.5 | 3.6 | | 2.0 |
| | 0 | 7.0 | 10.5* | 3.8 | 5.7 | 2.4 | 3.5 | | 2.6* |
| | -1.5 | 6.7 | 10.7* | 3.6 | 5.4 | 2.3 | 3.4 | | 2.7 |
| Blade down | 7.5 | | | | | | | | 3.5* |
| | 6.0 | | | 4.3 | 4.9* | | | | 3.5* |
| | 4.5 | 6.7* | 6.7* | 4.3 | 5.3* | 2.7 | 4.3* | | 2.8* |
| | 3.0 | 7.6 | 9.2* | 4.2 | 6.0* | 2.7 | 4.7* | | 2.8* |
| | 1.5 | 7.5 | 9.6* | 4.2 | 6.6* | 2.6 | 4.8* | | 2.4 |
| | 0 | 7.5 | 10.5* | 4.0 | 6.6* | 2.5 | 4.9* | | 2.6* |
| | -1.5 | 7.1 | 10.7* | 3.8 | 6.8* | 2.4 | 4.2* | | 3.1 |

Stick 2.25 m

| Under-carriage | 3.0 m | | 4.5 m | | 6.0 m | | 7.5 m | | m |
|----------------|-------|------|-------|-----|-------|-----|-------|--|------|
| | | | | | | | | | |
| S | 7.5 | | | | | | | | 3.1* |
| | 6.0 | | | | | | | | 3.1* |
| | 4.5 | 5.6* | 5.6* | 3.9 | 4.6* | 2.4 | 3.6 | | 2.5* |
| | 3.0 | 6.8 | 9.1* | 3.8 | 5.6 | 2.4 | 3.6 | | 2.5* |
| | 1.5 | 6.7 | 9.5* | 3.8 | 5.5 | 2.3 | 3.6 | | 1.7 |
| | 0 | 6.5 | 10.4* | 3.6 | 5.6 | 2.2 | 3.4 | | 2.3* |
| | -1.5 | 6.2 | 10.6* | 3.3 | 5.3 | 2.1 | 3.3 | | 1.6 |
| Blade up | 7.5 | | | | | | | | 3.1* |
| | 6.0 | | | 4.2 | 4.6* | | | | 3.1* |
| | 4.5 | 5.6* | 5.6* | 4.1 | 5.1* | 2.6 | 3.7 | | 2.5* |
| | 3.0 | 7.2 | 9.1* | 4.0 | 5.6 | 2.6 | 3.7 | | 2.5* |
| | 1.5 | 7.1 | 9.5* | 4.0 | 5.6 | 2.5 | 3.6 | | 2.2 |
| | 0 | 7.0 | 10.4* | 3.8 | 5.7 | 2.4 | 3.5 | | 2.3* |
| | -1.5 | 6.7 | 10.6* | 3.6 | 5.4 | 2.3 | 3.4 | | 1.9 |
| Blade down | 7.5 | | | | | | | | 3.1* |
| | 6.0 | | | 4.3 | 4.6* | | | | 3.1* |
| | 4.5 | 5.6* | 5.6* | 4.3 | 5.1* | 2.7 | 4.3* | | 2.5* |
| | 3.0 | 7.6 | 9.1* | 4.2 | 5.9* | 2.7 | 4.6* | | 2.5* |
| | 1.5 | 7.5 | 9.5* | 4.2 | 6.5* | 2.6 | 4.8* | | 2.3 |
| | 0 | 7.5 | 10.4* | 4.0 | 6.6* | 2.5 | 4.8* | | 2.3 |
| | -1.5 | 7.1 | 10.6* | 3.8 | 6.8* | 2.4 | 4.4* | | 1.9 |

Stick 2.45 m

| Under-carriage | 3.0 m | | 4.5 m | | 6.0 m | | 7.5 m | | m |
|----------------|-------|------|-------|------|-------|-----|-------|--|------|
| | | | | | | | | | |
| S | 7.5 | | | | | | | | 2.7* |
| | 6.0 | | | | | | | | 2.7* |
| | 4.5 | 4.8* | 4.8* | 3.9 | 5.0* | 2.4 | 3.7 | | 2.2* |
| | 3.0 | 6.8 | 8.7* | 3.8 | 5.6 | 2.4 | 3.6 | | 2.2* |
| | 1.5 | 6.7 | 9.4* | 3.8 | 5.5 | 2.3 | 3.6 | | 1.9 |
| | 0 | 6.6 | 10.3* | 3.6 | 5.6 | 2.2 | 3.4 | | 2.1* |
| | -1.5 | 6.2 | 10.5* | 3.3 | 5.4 | 2.1 | 3.3 | | 2.5* |
| Blade up | 7.5 | | | | | | | | 2.7* |
| | 6.0 | | | 4.2 | 4.2* | | | | 2.7* |
| | 4.5 | 4.8* | 4.8* | 4.1 | 5.0* | 2.6 | 3.7 | | 2.2* |
| | 3.0 | 7.2 | 8.7* | 4.0 | 5.6 | 2.6 | 3.7 | | 2.1* |
| | 1.5 | 7.1 | 9.4* | 4.0 | 5.6 | 2.5 | 3.6 | | 1.8 |
| | 0 | 7.1 | 10.3* | 3.8 | 5.6 | 2.4 | 3.5 | | 2.1* |
| | -1.5 | 6.7 | 10.5* | 3.6 | 5.4 | 2.3 | 3.4 | | 1.7 |
| Blade down | 7.5 | | | | | | | | 2.7* |
| | 6.0 | | | 4.2* | 4.2* | | | | 2.7* |
| | 4.5 | 4.8* | 4.8* | 4.3 | 5.0* | 2.7 | 4.2* | | 2.2* |
| | 3.0 | 7.6 | 8.7* | 4.2 | 5.7* | 2.7 | 4.5* | | 2.1* |
| | 1.5 | 7.4 | 9.4* | 4.2 | 6.4* | 2.6 | 4.7* | | 1.9 |
| | 0 | 7.5 | 10.3* | 4.1 | 6.5* | 2.5 | 4.8* | | 2.2* |
| | -1.5 | 7.1 | 10.5* | 3.8 | 6.7* | 2.4 | 4.6* | | 3.0* |

Stick 2.65 m

| Under-carriage | 3.0 m | | 4.5 m | | 6.0 m | | 7.5 m | | m |
|----------------|-------|-----|-------|------|-------|------|-------|-----|------|
| | | | | | | | | | |
| S | 7.5 | | | | | | | | 2.4* |
| | 6.0 | | | | | | | | 2.4* |
| | 4.5 | | | 2.7* | 2.7* | | | | 2.7* |
| | 3.0 | 6.8 | 8.4* | 3.9 | 4.5* | 2.4 | 3.7 | | 3.9* |
| | 1.5 | 6.6 | 9.4* | 3.7 | 5.5 | 2.3 | 3.6 | | 3.9* |
| | 0 | 6.6 | 10.1* | 3.6 | 5.5 | 2.2 | 3.5 | 1.5 | 2.4 |
| | -1.5 | 6.2 | 10.5* | 3.4 | 5.4 | 2.1 | 3.3 | | 1.6 |
| Blade up | 7.5 | | | | | | | | 2.4* |
| | 6.0 | | | 2.7* | 2.7* | | | | 2.4* |
| | 4.5 | | | 3.9* | 4.5* | 2.5* | 3.7 | | 2.0* |
| | 3.0 | 7.2 | 8.4* | 4.1 | 4.5* | 2.6 | 3.7 | | 2.0* |
| | 1.5 | 7.0 | 9.4* | 4.0 | 5.6 | 2.6 | 3.7 | | 1.9* |
| | 0 | 7.1 | 10.1* | 3.9 | 5.6 | 2.4 | 3.5 | 1.7 | 2.0* |
| | -1.5 | 6.7 | 10.5* | 3.6 | 5.5 | 2.3 | 3.4 | | 1.6 |
| Blade down | 7.5 | | | | | | | | 2.7* |
| | 6.0 | | | 2.7* | 2.7* | | | | 2.7* |
| | 4.5 | | | 3.9* | 4.5* | 2.5* | 3.7 | | 3.9* |
| | 3.0 | 7.6 | 8.4* | 4.2 | 5.6* | 2.7 | 4.4* | | 3.9* |
| | 1.5 | 7.4 | 9.4* | 4.2 | 6.3* | 2.7 | 4.7* | | 2.8* |
| | 0 | 7.5 | 10.1* | 4.1 | 6.5* | 2.5 | 4.7* | 1.8 | 2.8* |
| | -1.5 | 7.1 | 10.5* | 3.8 | 6.6* | 2.4 | 4.7* | | 2.0* |

Height Can be slewed through 360° In longitudinal position of undercarriage Max. reach * Limited by hydr. capacity

The load values are quoted in tons (t) at stick end (without bucket), and may be swung 360° on firm and even ground. Adjacent values are valid for the undercarriage when in the longitudinal position. Capacities are valid for 600 mm wide track pads with adjusting cylinder in optimal position. Indicated loads are based on ISO 10567 standard and do not exceed 75% of tipping or 87% of hydraulic capacity (indicated via *). Without bucket cylinder, link and lever the lift capacities will increase by 186 kg. Lifting capacity of the excavator is limited by machine stability and hydraulic capacity. According to European Standard, EN 474-5: In the European Union excavators have to be equipped with an overload warning device, a load diagram and automatic safety check valves on hoist cylinders and stick cylinder(s), when they are used for lifting operations which require the use of lifting accessories. Determine maximum load lift from load lift chart displayed in the operator's cab or from load lift chart detailed in the operator's manual supplied with the machine.

Lift capacities

with mono boom offset 4.30 m, counterweight 2.8 t and track pads 600 mm

Stick 2.05 m

| Under-carriage | m | 3.0 m | | 4.5 m | | 6.0 m | | 7.5 m | | m |
|----------------|------|-------|------|-------|------|-------|------|-------|------|-----|
| | | | | | | | | | | |
| S | 7.5 | | | | | | | | | |
| | 6.0 | 5.0* | 5.0* | | | | | 2.7* | 2.7* | 4.5 |
| | 4.5 | 5.7* | 5.7* | | | | | 2.5* | 2.5* | 5.6 |
| | 3.0 | 6.5 | 8.1* | 3.5 | 5.5 | 2.2 | 3.5 | 2.1 | 2.6* | 6.2 |
| | 1.5 | 5.6 | 7.8* | 3.2 | 5.2 | 2.1 | 3.4 | 1.9 | 2.8* | 6.4 |
| | 0 | 5.4 | 8.5* | 3.0 | 5.0 | 2.0 | 3.3 | 2.0 | 3.2 | 6.2 |
| Blade up | -1.5 | 5.4 | 8.6* | 3.0 | 5.0 | | | 2.3 | 3.7 | 5.5 |
| | -3.0 | 5.6 | 5.9* | | | | | 3.3 | 4.1* | 4.3 |
| | 7.5 | 5.0* | 5.0* | | | | | 2.7* | 2.7* | |
| | 6.0 | 5.7* | 5.7* | 4.0 | 4.8* | | | 2.5* | 2.5* | 4.5 |
| | 4.5 | 7.0 | 8.1* | 3.7 | 5.6* | 2.4 | 3.5 | 2.3 | 2.6* | 5.6 |
| | 3.0 | 6.1 | 7.8* | 3.5 | 5.3 | 2.3 | 3.4 | 2.1 | 2.8* | 6.2 |
| Blade down | 1.5 | 5.9 | 8.5* | 3.5 | 5.1 | 2.2 | 3.3 | 2.2 | 3.2 | 6.4 |
| | 0 | 5.9 | 8.6* | 3.2 | 5.0 | | | 2.5 | 3.7 | 6.2 |
| | -1.5 | 5.9* | 5.9* | | | | | 3.6 | 4.1* | 5.5 |
| | -3.0 | | | | | | | | | 4.3 |
| | 7.5 | 5.0* | 5.0* | | | | | 2.7* | 2.7* | |
| | 6.0 | 5.7* | 5.7* | 4.2 | 4.8* | | | 2.5* | 2.5* | 4.5 |
| S | 4.5 | 7.4 | 8.1* | 4.0 | 5.6* | 2.5 | 3.8* | 2.4 | 2.6* | 5.6 |
| | 3.0 | 6.5 | 7.8* | 3.7 | 6.3* | 2.4 | 4.8* | 2.2 | 2.8* | 6.2 |
| | 1.5 | 6.3 | 8.5* | 3.5 | 6.6* | 2.4 | 4.7* | 2.3 | 3.4* | 6.4 |
| | 0 | 6.3 | 8.6* | 3.4 | 5.9* | | | 2.6 | 4.5* | 6.2 |
| | -1.5 | 5.9* | 5.9* | | | | | 3.8 | 4.1* | 5.5 |
| | -3.0 | | | | | | | | | 4.3 |

Stick 2.25 m

| Under-carriage | m | 3.0 m | | 4.5 m | | 6.0 m | | 7.5 m | | m | | |
|----------------|------|-------|------|-------|------|-------|------|-------|--|------|------|-----|
| | | | | | | | | | | | | |
| S | 7.5 | | | | | | | | | | | |
| | 6.0 | | | 3.2* | 3.2* | | | | | 2.4* | 2.4* | 4.7 |
| | 4.5 | 5.3* | 5.3* | 3.7 | 4.6* | | | | | 2.3* | 2.3* | 5.8 |
| | 3.0 | 6.6 | 7.7* | 3.5 | 5.4* | 2.2 | 3.5 | | | 2.0 | 2.3* | 6.4 |
| | 1.5 | 5.7 | 9.4* | 3.2 | 5.2 | 2.1 | 3.4 | | | 1.9 | 2.5* | 6.6 |
| | 0 | 5.4 | 8.7* | 3.0 | 5.0 | 2.0 | 3.3 | | | 1.9 | 3.0* | 6.3 |
| Blade up | -1.5 | 5.3 | 8.9* | 2.9 | 4.9 | | | | | 2.1 | 3.5 | 5.7 |
| | -3.0 | 5.5 | 6.4* | 3.0 | 4.2* | | | | | 3.0 | 4.1* | 4.5 |
| | 7.5 | | | 3.2* | 3.2* | | | | | 2.4* | 2.4* | 4.7 |
| | 6.0 | | | 4.0 | 4.6* | | | | | 2.3* | 2.3* | 5.8 |
| | 4.5 | 5.3* | 5.3* | 3.8 | 5.4* | 2.4 | 3.5 | | | 2.2 | 2.3* | 6.4 |
| | 3.0 | 7.1 | 7.7* | 3.5 | 5.3 | 2.3 | 3.4 | | | 2.0 | 2.5* | 6.6 |
| Blade down | 1.5 | 6.2 | 9.4* | 3.5 | 5.3 | 2.4 | 4.7* | | | 2.1 | 3.0* | 6.3 |
| | 0 | 5.8 | 8.7* | 3.3 | 5.1 | 2.2 | 3.3 | | | 2.3 | 3.5 | 5.7 |
| | -1.5 | 5.8 | 8.9* | 3.2 | 5.0 | | | | | 3.3 | 4.1* | 4.5 |
| | -3.0 | 6.0 | 6.4* | 3.3 | 4.2* | | | | | | | |
| | 7.5 | | | 3.2* | 3.2* | | | | | 2.4* | 2.4* | 4.7 |
| | 6.0 | | | 4.2 | 4.6* | | | | | 2.3* | 2.3* | 5.8 |
| S | 4.5 | 5.3* | 5.3* | 4.0 | 5.4* | 2.6 | 4.1* | | | 2.3* | 2.3* | 6.4 |
| | 3.0 | 7.5 | 7.7* | 4.0 | 5.4* | 2.4 | 4.7* | | | 2.1 | 2.5* | 6.6 |
| | 1.5 | 6.6 | 9.4* | 3.7 | 6.2* | 2.4 | 4.7* | | | 2.2 | 3.0* | 6.3 |
| | 0 | 6.3 | 8.7* | 3.5 | 6.5* | 2.4 | 4.7* | | | 2.5 | 4.0* | 5.7 |
| | -1.5 | 6.3 | 8.9* | 3.4 | 6.1* | | | | | 3.5 | 4.1* | 4.5 |
| | -3.0 | 6.4* | 6.4* | 3.5 | 4.2* | | | | | | | |

Stick 2.45 m

| Under-carriage | m | 3.0 m | | 4.5 m | | 6.0 m | | 7.5 m | | m |
|----------------|------|-------|------|-------|------|-------|------|-------|------|-----|
| | | | | | | | | | | |
| S | 7.5 | | | | | | | 2.9* | 2.9* | 2.8 |
| | 6.0 | | | 3.3* | 3.3* | | | 2.2* | 2.2* | 5.0 |
| | 4.5 | 4.7* | 4.7* | 3.8 | 4.4* | 2.2* | 2.2* | 2.1* | 2.1* | 6.0 |
| | 3.0 | 6.7 | 7.2* | 3.5 | 5.2* | 2.2 | 3.5 | 1.9 | 2.1* | 6.6 |
| | 1.5 | 5.7 | 9.7* | 3.2 | 5.2 | 2.1 | 3.4 | 1.8 | 2.3* | 6.7 |
| | 0 | 5.3 | 8.8* | 3.0 | 5.0 | 2.0 | 3.3 | 1.8 | 2.7* | 6.5 |
| Blade up | -1.5 | 5.3 | 9.1* | 2.9 | 4.9 | | | 2.0 | 3.3 | 5.9 |
| | -3.0 | 5.4 | 6.8* | 3.0 | 4.6* | | | 2.7 | 4.1* | 4.8 |
| | 7.5 | | | 3.3* | 3.3* | | | 2.9* | 2.9* | 2.8 |
| | 6.0 | | | 4.0 | 4.4* | 2.2* | 2.2* | 2.2* | 2.2* | 5.0 |
| | 4.5 | 4.7* | 4.7* | 3.8 | 5.2* | 2.2* | 2.2* | 2.1* | 2.1* | 6.0 |
| | 3.0 | 7.2 | 7.2* | 3.8 | 5.2* | 2.4 | 3.5 | 2.1 | 2.1* | 6.6 |
| Blade down | 1.5 | 6.2 | 9.7* | 3.5 | 5.3 | 2.3 | 3.4 | 1.9 | 2.3* | 6.7 |
| | 0 | 5.8 | 8.8* | 3.3 | 5.1 | 2.2 | 3.3 | 2.0 | 2.7* | 6.5 |
| | -1.5 | 5.8 | 9.1* | 3.2 | 5.0 | | | 2.2 | 3.3 | 5.9 |
| | -3.0 | 5.9 | 6.8* | 3.3 | 4.6* | | | 3.0 | 4.1* | 4.8 |
| | 7.5 | | | 3.3* | 3.3* | | | 2.9* | 2.9* | 2.8 |
| | 6.0 | | | 4.3 | 4.4* | 2.2* | 2.2* | 2.1* | 2.1* | 6.0 |
| S | 4.5 | 4.7* | 4.7* | 4.0 | 5.2* | 2.6 | 4.2* | 2.1* | 2.1* | 6.6 |
| | 3.0 | 7.2* | 7.2* | 4.0 | 5.2* | 2.6 | 4.2* | 2.0 | 2.3* | 6.7 |
| | 1.5 | 6.7 | 9.7* | 3.7 | 6.1* | 2.4 | 4.6* | 2.1 | 2.7* | 6.5 |
| | 0 | 6.2 | 8.8* | 3.5 | 6.5* | 2.3 | 4.7* | 2.1 | 2.7* | 6.5 |
| | -1.5 | 6.2 | 9.1* | 3.4 | 6.1* | | | 2.3 | 3.5* | 5.9 |
| | -3.0 | 6.4 | 6.8* | 3.5 | 4.6* | | | 3.2 | 4.1* | 4.8 |

Stick 2.65 m

| Under-carriage | m | 3.0 m | | 4.5 m | | 6.0 m | | 7.5 m | | m |
|----------------|------|-------|------|-------|------|-------|------|-------|------|-----|
| | | | | | | | | | | |
| S | 7.5 | | | | | | | 2.5* | 2.5* | 3.3 |
| | 6.0 | | | 3.3* | 3.3* | | | 2.0* | 2.0* | 5.2 |
| | 4.5 | | | 3.8 | 4.2* | 2.3 | 2.6* | 1.9* | 1.9* | 6.2 |
| | 3.0 | 6.8 | 6.8* | 3.5 | 5.0* | 2.2 | 3.5 | 1.8 | 1.9* | 6.8 |
| | 1.5 | 5.8 | 9.4* | 3.2 | 5.3 | 2.1 | 3.4 | 1.7 | 2.1* | 6.9 |
| | 0 | 5.3 | 9.0* | 3.0 | 5.0 | 2.0 | 3.2 | 1.7 | 2.4* | 6.7 |
| Blade up | -1.5 | 5.2 | 9.3* | 2.9 | 4.9 | 2.0 | 3.2 | 1.9 | 3.1 | 6.1 |
| | -3.0 | 5.4 | 7.2* | 2.9 | 4.9* | | | 2.5 | 4.1* | 5.1 |
| | 7.5 | | | 3.3* | 3.3* | | | 2.5* | 2.5* | 3.3 |
| | 6.0 | | | 4.1 | 4.2* | 2.5 | 2.6* | 2.0* | 2.0* | 5.2 |
| | 4.5 | | | 4.1 | 4.2* | 2.5 | 2.6* | 1.9* | 1.9* | 6.2 |
| | 3.0 | 6.8* | 6.8* | 3.8 | 5.0* | 2.4 | 3.6 | 1.9* | 1.9* | 6.8 |
| Blade down | 1.5 | 6.8 | 9.4* | 3.5 | 5.3 | 2.3 | 3.4 | 1.9 | 2.1* | 6.9 |
| | 0 | 5.8 | 9.0* | 3.3 | 5.1 | 2.2 | 3.3 | 1.9 | 2.4* | 6.7 |
| | -1.5 | 5.7 | 9.3* | 3.2 | 4.9 | 2.2 | 3.2 | 2.1 | 3.1* | 6.1 |
| | -3.0 | 5.9 | 7.2* | 3.2 | 4.9* | | | 2.8 | 4.1* | 5.1 |
| | 7.5 | | | 3.3* | 3.3* | | | 2.5* | 2.5* | 3.3 |
| | 6.0 | | | 4.2* | 4.2* | 2.6* | 2.6* | 1.9* | 1.9* | 6.2 |
| S | 4.5 | | | 4.0 | 5.0* | 2.6 | 4.1* | 1.9* | 1.9* | 6.8 |
| | 3.0 | 6.8* | 6.8* | 4.0 | 5.0* | 2.6 | 4.1* | 1.9* | 1.9* | 6.8 |
| | 1.5 | 6.7 | 9.4* | 3.7 | 5.9* | 2.4 | 4.6* | 2.0 | 2.1* | 6.9 |
| | 0 | 6.2 | 9.0* | 3.5 | 6.5* | 2.3 | 4.7* | 2.0 | 2.4* | 6.7 |
| | -1.5 | 6.2 | 9.3* | 3.4 | 6.2* | 2.3 | 4.3* | 2.2 | 3.1* | 6.1 |
| | -3.0 | 6.3 | 7.2* | 3.4 | 4.9* | | | 2.9 | 4.1* | 5.1 |

Height Can be slewed through 360° In longitudinal position of undercarriage Max. reach * Limited by hydr. capacity

The load values are quoted in tons (t) at stick end (without bucket), and may be swung 360° on firm and even ground. Adjacent values are valid for the undercarriage when in the longitudinal position. Capacities are valid for 600 mm wide track pads. Indicated loads are based on ISO 10567 standard and do not exceed 75% of tipping or 87% of hydraulic capacity (indicated via *). Without bucket cylinder, link and lever the lift capacities will increase by 186 kg. Lifting capacity of the excavator is limited by machine stability and hydraulic capacity.

According to European Standard, EN 474-5: In the European Union excavators have to be equipped with an overload warning device, a load diagram and automatic safety check valves on hoist cylinders and stick cylinder(s), when they are used for lifting operations which require the use of lifting accessories.

Determine maximum load lift from load lift chart displayed in the operator's cab or from load lift chart detailed in the operator's manual supplied with the machine.

Lift capacities

with two-piece boom offset 4.90 m, counterweight 2.8 t and track pads 600 mm

Stick 2.05 m

| Under-carriage m | 3.0 m | | 4.5 m | | 6.0 m | | 7.5 m | | m |
|---------------------|-------|-------|-------|------|-------|------|-------|--|---------------|
| | | | | | | | | | |
| 7.5 | | | | | | | | | 3.3* 3.3* 3.5 |
| 6.0 | | | | | | | | | 2.7* 2.7* 5.4 |
| 4.5 | 6.6* | 6.6* | 3.8 | 4.7* | 2.2 | 3.5 | | | 2.0 2.5* 6.4 |
| 3.0 | 6.6 | 8.8* | 3.7 | 5.4 | 2.2 | 3.5 | | | 1.6 2.5* 6.9 |
| 1.5 | 6.5 | 9.1* | 3.7 | 5.4 | 2.1 | 3.4 | | | 1.5 2.5 7.0 |
| 0 | 6.4 | 9.9* | 3.5 | 5.5 | 2.0 | 3.3 | | | 1.5 2.6 6.8 |
| -1.5 | 6.0 | 10.2* | 3.1 | 5.1 | 1.9 | 3.1 | | | 1.7 2.9 6.3 |
| -3.0 | 5.6 | 9.2* | 2.9 | 4.7* | | | | | 2.3 3.0* 5.1 |
| 7.5 | | | | | | | | | 3.3* 3.3* 3.5 |
| 6.0 | | | | | | | | | 2.7* 2.7* 5.4 |
| 4.5 | 6.6* | 6.6* | 4.1 | 4.7* | 2.4 | 3.6 | | | 2.1 2.5* 6.4 |
| 3.0 | 7.0 | 8.8* | 4.0 | 5.5 | 2.4 | 3.6 | | | 1.8 2.5* 6.9 |
| 1.5 | 6.9 | 9.1* | 4.0 | 5.4 | 2.3 | 3.5 | | | 1.7 2.6 7.0 |
| 0 | 6.9 | 9.9* | 3.7 | 5.6 | 2.2 | 3.3 | | | 1.7 2.6 6.8 |
| -1.5 | 6.5 | 10.2* | 3.3 | 5.2 | 2.0 | 3.2 | | | 1.9 2.9 6.3 |
| -3.0 | 6.1 | 9.2* | 3.2 | 4.7* | | | | | 2.6 3.0* 5.1 |
| 7.5 | | | | | | | | | 3.3* 3.3* 3.5 |
| 6.0 | | | | | | | | | 2.7* 2.7* 5.4 |
| 4.5 | 6.6* | 6.6* | 4.2 | 5.0* | 2.6 | 4.2* | | | 2.3 2.5* 6.4 |
| 3.0 | 7.4 | 8.8* | 4.1 | 5.6* | 2.6 | 4.4* | | | 1.9 2.5* 6.9 |
| 1.5 | 7.3 | 9.1* | 4.1 | 6.2* | 2.5 | 4.5* | | | 1.8 2.7* 7.0 |
| 0 | 7.4 | 9.9* | 4.0 | 6.3* | 2.3 | 4.6* | | | 1.8 3.1* 6.8 |
| -1.5 | 6.9 | 10.2* | 3.6 | 6.5* | 2.2 | 4.0* | | | 2.0 3.4* 6.3 |
| -3.0 | 6.6 | 9.2* | 3.4 | 4.7* | | | | | 2.7 3.0* 5.1 |

Stick 2.25 m

| Under-carriage m | 3.0 m | | 4.5 m | | 6.0 m | | 7.5 m | | m |
|---------------------|-------|-------|-------|------|-------|------|-------|--|---------------|
| | | | | | | | | | |
| 7.5 | | | | | | | | | 2.9* 2.9* 3.9 |
| 6.0 | | | | | | | | | 2.4* 2.4* 5.6 |
| 4.5 | 6.0* | 6.0* | 3.8 | 4.8* | 2.3 | 3.6 | | | 1.9 2.3* 6.6 |
| 3.0 | 6.7 | 8.6* | 3.7 | 5.4 | 2.3 | 3.6 | | | 1.6 2.3* 7.1 |
| 1.5 | 6.5 | 9.0* | 3.7 | 5.3 | 2.2 | 3.5 | | | 1.4 2.4 7.2 |
| 0 | 6.5 | 9.8* | 3.5 | 5.4 | 2.0 | 3.3 | | | 1.5 2.5 7.0 |
| -1.5 | 6.0 | 10.1* | 3.1 | 5.2 | 1.9 | 3.1 | | | 1.6 2.7 6.5 |
| -3.0 | 5.6 | 9.7* | 2.9 | 4.9 | | | | | 2.1 2.9* 5.5 |
| 7.5 | | | | | | | | | 2.9* 2.9* 3.9 |
| 6.0 | | | | | | | | | 2.4* 2.4* 5.6 |
| 4.5 | 6.0* | 6.0* | 4.1 | 4.8* | 2.5 | 3.6 | | | 2.0 2.3* 6.6 |
| 3.0 | 7.0 | 8.6* | 4.0 | 5.5 | 2.5 | 3.6 | | | 1.7 2.3* 7.1 |
| 1.5 | 6.9 | 9.0* | 3.9 | 5.4 | 2.4 | 3.5 | | | 1.6 2.4* 7.2 |
| 0 | 7.0 | 9.8* | 3.8 | 5.5 | 2.2 | 3.3 | | | 1.6 2.5 7.0 |
| -1.5 | 6.5 | 10.1* | 3.4 | 5.3 | 2.0 | 3.2 | | | 1.8 2.8 6.5 |
| -3.0 | 6.1 | 9.7* | 3.1 | 5.0 | | | | | 2.3 2.9* 5.5 |
| 7.5 | | | | | | | | | 2.9* 2.9* 3.9 |
| 6.0 | | | | | | | | | 2.4* 2.4* 5.6 |
| 4.5 | 6.0* | 6.0* | 4.2 | 4.8* | 2.6 | 4.1* | | | 2.2 2.3* 6.6 |
| 3.0 | 7.4 | 8.6* | 4.1 | 5.5* | 2.6 | 4.3* | | | 1.8 2.3* 7.1 |
| 1.5 | 7.2 | 9.0* | 4.1 | 6.1* | 2.5 | 4.5* | | | 1.7 2.4* 7.2 |
| 0 | 7.4 | 9.8* | 4.0 | 6.2* | 2.3 | 4.6* | | | 1.7 2.8* 7.0 |
| -1.5 | 7.0 | 10.1* | 3.6 | 6.5* | 2.2 | 4.2* | | | 1.9 3.4* 6.5 |
| -3.0 | 6.6 | 9.7* | 3.4 | 5.2* | | | | | 2.5 2.9* 5.5 |

Stick 2.45 m

| Under-carriage m | 3.0 m | | 4.5 m | | 6.0 m | | 7.5 m | | m |
|---------------------|-------|-------|-------|------|-------|------|-------|--|---------------|
| | | | | | | | | | |
| 7.5 | | | | | | | | | 2.6* 2.6* 4.2 |
| 6.0 | | | | | | | | | 2.2* 2.2* 5.9 |
| 4.5 | | | 3.9 | 4.2* | 2.3 | 3.6 | | | 1.8 2.0* 6.8 |
| 3.0 | 6.7 | 8.2* | 3.7 | 5.4* | 2.3 | 3.6 | | | 1.5 2.1* 7.3 |
| 1.5 | 6.5 | 9.0* | 3.7 | 5.3 | 2.2 | 3.5 | | | 1.4 2.2* 7.4 |
| 0 | 6.5 | 9.7* | 3.5 | 5.4 | 2.0 | 3.3 | | | 1.4 2.3 7.2 |
| -1.5 | 6.0 | 10.0* | 3.2 | 5.2 | 1.9 | 3.1 | | | 1.5 2.6 6.7 |
| -3.0 | 5.7 | 10.0* | 2.9 | 4.9 | | | | | 1.9 2.9* 5.7 |
| 7.5 | | | | | | | | | 2.6* 2.6* 4.2 |
| 6.0 | | | | | | | | | 2.2* 2.2* 5.9 |
| 4.5 | | | 4.2 | 4.2* | 2.5 | 3.6 | | | 1.9 2.0* 6.8 |
| 3.0 | 7.0 | 8.2* | 3.9 | 5.4* | 2.5 | 3.6 | | | 1.6 2.1* 7.3 |
| 1.5 | 6.9 | 9.0* | 3.9 | 5.4 | 2.4 | 3.5 | | | 1.5 2.2* 7.4 |
| 0 | 6.9* | 9.7* | 3.8 | 5.4 | 2.2 | 3.4 | | | 1.5 2.4 7.2 |
| -1.5 | 6.5 | 10.0* | 3.4 | 5.3 | 2.1 | 3.2 | | | 1.7 2.6 6.7 |
| -3.0 | 6.2 | 10.0* | 3.1 | 5.0 | | | | | 2.1 2.9* 5.7 |
| 7.5 | | | | | | | | | 2.6* 2.6* 4.2 |
| 6.0 | | | | | | | | | 2.2* 2.2* 5.9 |
| 4.5 | | | 4.2* | 4.2* | 2.7 | 4.0* | | | 2.0* 2.0* 6.8 |
| 3.0 | 7.4 | 8.2* | 4.1 | 5.4* | 2.6 | 4.2* | | | 1.7 2.1* 7.3 |
| 1.5 | 7.2 | 9.0* | 4.1 | 6.0* | 2.5 | 4.4* | | | 1.6 2.2* 7.4 |
| 0 | 7.3 | 9.7* | 4.0 | 6.2* | 2.4 | 4.5* | | | 1.6 2.5* 7.2 |
| -1.5 | 7.0 | 10.0* | 3.6 | 6.3* | 2.2 | 4.4* | | | 1.8 3.0* 6.7 |
| -3.0 | 6.6 | 10.0* | 3.4 | 5.6* | | | | | 2.3 2.9* 5.7 |

Stick 2.65 m

| Under-carriage m | 3.0 m | | 4.5 m | | 6.0 m | | 7.5 m | | m |
|---------------------|-------|-------|-------|------|-------|------|-------|------|---------------|
| | | | | | | | | | |
| 7.5 | | | | | | | | | 2.3* 2.3* 4.6 |
| 6.0 | | | | | | | | | 1.9* 1.9* 6.1 |
| 4.5 | | | 2.5* | 2.5* | 2.4 | 3.6 | | | 1.7 1.9* 7.0 |
| 3.0 | 6.7 | 7.9* | 3.7 | 5.2* | 2.4 | 3.6 | | | 1.4 1.9* 7.5 |
| 1.5 | 6.4 | 8.9* | 3.6 | 5.3 | 2.3 | 3.5 | | | 1.3 2.0* 7.6 |
| 0 | 6.5 | 9.6* | 3.5 | 5.3 | 2.1 | 3.3 | | | 1.3 2.2* 7.4 |
| -1.5 | 6.0 | 9.9* | 3.2 | 5.3 | 1.9 | 3.2 | | | 1.4 2.5 6.9 |
| -3.0 | 5.7 | 10.3* | 2.9 | 4.9 | | | | | 1.8 2.9* 6.0 |
| 7.5 | | | | | | | | | 2.3* 2.3* 4.6 |
| 6.0 | | | | | | | | | 1.9* 1.9* 6.1 |
| 4.5 | | | 2.5* | 2.5* | 2.3* | 2.3* | | | 1.8 1.9* 7.0 |
| 3.0 | 7.1 | 7.9* | 3.9 | 5.2* | 2.5 | 3.6 | | | 1.6 1.9* 7.5 |
| 1.5 | 6.8 | 8.9* | 3.9 | 5.3 | 2.4 | 3.6 | 1.5 | 2.3 | 1.5 2.0* 7.6 |
| 0 | 6.9 | 9.6* | 3.8 | 5.4 | 2.3 | 3.4 | | | 1.5 2.2* 7.4 |
| -1.5 | 6.5 | 9.9* | 3.5 | 5.4 | 2.1 | 3.2 | | | 1.6 2.5 6.9 |
| -3.0 | 6.2 | 10.3* | 3.1 | 5.0 | | | | | 2.0 2.9* 6.0 |
| 7.5 | | | | | | | | | 2.5* 2.5* 4.6 |
| 6.0 | | | | | | | | | 1.9* 1.9* 6.1 |
| 4.5 | | | 3.9* | 3.9* | 2.3* | 2.3* | | | 1.9* 1.9* 7.0 |
| 3.0 | 7.4 | 7.9* | 4.3 | 4.5* | 2.7 | 3.8* | | | 1.7 1.9* 7.5 |
| 1.5 | 7.2 | 8.9* | 4.0 | 5.9* | 2.6 | 4.4* | 1.6 | 2.5* | 1.6 2.0* 7.6 |
| 0 | 7.2 | 9.6* | 4.0 | 6.1* | 2.4 | 4.5* | | | 1.6 2.2* 7.4 |
| -1.5 | 7.0 | 9.9* | 3.7 | 6.3* | 2.2 | 4.5* | | | 1.7 2.7* 6.9 |
| -3.0 | 6.6 | 10.3* | 3.4 | 5.9* | | | | | 2.1 2.9* 6.0 |

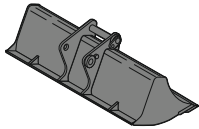
Height Can be slewed through 360° In longitudinal position of undercarriage Max. reach * Limited by hydr. capacity

The load values are quoted in tons (t) at stick end (without bucket), and may be swung 360° on firm and even ground. Adjacent values are valid for the undercarriage when in the longitudinal position. Capacities are valid for 600 mm wide track pads with adjusting cylinder in optimal position. Indicated loads are based on ISO 10567 standard and do not exceed 75% of tipping or 87% of hydraulic capacity (indicated via *). Without bucket cylinder, link and lever the lift capacities will increase by 186 kg. Lifting capacity of the excavator is limited by machine stability and hydraulic capacity.

According to European Standard, EN 474-5: In the European Union excavators have to be equipped with an overload warning device, a load diagram and automatic safety check valves on hoist cylinders and stick cylinder(s), when they are used for lifting operations which require the use of lifting accessories.

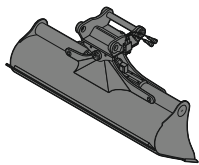
Determine maximum load lift from load lift chart displayed in the operator's cab or from load lift chart detailed in the operator's manual supplied with the machine.

Attachments



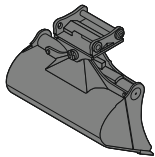
Rigid ditch cleaning bucket

| GRL 90, for direct mounting | | | | | | | |
|--|----------------|-------|--|-------|--|-------|-------|
| Cutting width | mm | 1,500 | | 2,000 | | 2,000 | |
| Capacity | m ³ | 0.35 | | 0.48 | | 0.65 | |
| Weight | kg | 275 | | 350 | | 390 | |
| GRL 90, for mounting to quick coupler SWA 33 | | | | | | | |
| Cutting width | mm | 1,500 | | 2,000 | | 2,000 | |
| Capacity | m ³ | 0.50 | | 0.48 | | 0.65 | |
| Weight | kg | 360 | | 350 | | 390 | |
| GRL 90, for mounting to quick coupler SWA 48 | | | | | | | |
| Cutting width | mm | 1,500 | | 1,500 | | 2,000 | 2,400 |
| Capacity | m ³ | 0.50 | | 0.95 | | 0.70 | 0.85 |
| Weight | kg | 430 | | 560 | | 400 | 600 |



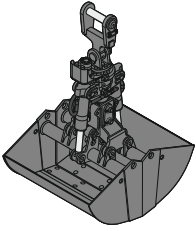
Tiltable ditch cleaning bucket

| GRL 90, 2 x 50° tiltable, for direct mounting | | | | | | | | |
|--|----------------|-------|-------|-------|-------|-------|-------|-------|
| Cutting width | mm | 1,600 | 1,600 | 2,000 | 2,000 | 2,200 | 2,400 | |
| Capacity | m ³ | 0.55 | 0.80 | 0.50 | 0.70 | 0.80 | 0.85 | |
| Weight | kg | 640 | 770 | 650 | 790 | 800 | 850 | |
| GRL 90, 2 x 50° tiltable, for mounting to quick coupler SWA 33 | | | | | | | | |
| Cutting width | mm | 1,600 | 1,600 | 2,000 | 2,000 | 2,000 | 2,200 | |
| Capacity | m ³ | 0.55 | 0.80 | 0.50 | 0.70 | 1.00 | 0.80 | |
| Weight | kg | 650 | 770 | 660 | 780 | 880 | 800 | |
| GRL 90, 2 x 50° tiltable, for mounting to quick coupler SWA 48 | | | | | | | | |
| Cutting width | mm | 1,600 | 1,600 | 2,000 | 2,000 | 2,000 | 2,200 | 2,400 |
| Capacity | m ³ | 0.55 | 0.80 | 0.50 | 0.70 | 1.00 | 0.80 | 0.85 |
| Weight | kg | 730 | 850 | 740 | 870 | 940 | 870 | 930 |



Tilt bucket

| SL 90, 2 x 50° tiltable, for direct mounting | | | | | | |
|--|----------------|-------|-------|-------|-------|-------|
| Cutting width | mm | 1,500 | | 1,600 | | |
| Capacity | m ³ | 0.60 | | 0.80 | | |
| Weight | kg | 650 | | 740 | | |
| SL 90, 2 x 50° tiltable, for mounting to quick coupler SWA 33 | | | | | | |
| Cutting width | mm | 1,500 | | 1,600 | | |
| Capacity | m ³ | 0.60 | | 0.80 | | |
| Weight | kg | 660 | | 740 | | |
| SL 90, 2 x 50° tiltable, for mounting to quick coupler SWA 33 and SWA 48 | | | | | | |
| Cutting width | mm | 1,500 | 1,600 | 1,600 | 1,600 | 1,600 |
| Capacity | m ³ | 1.20 | 0.80 | 0.60 | 1.00 | 1.00 |
| Weight | kg | 870 | 820 | 950 | 870 | 1,000 |
| HD version | | X | | X | | X |



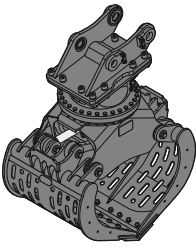
Clamshell grab

GM 5B, earthmoving shell, for mounting to quick coupler SWA 33

| | | | | | | |
|---------------|----------------|------|------|------|------|-------|
| Cutting width | mm | 300 | 400 | 600 | 800 | 1,000 |
| Capacity | m ³ | 0.10 | 0.13 | 0.20 | 0.27 | 0.34 |
| Weight | kg | 530 | 570 | 600 | 640 | 710 |

GM 8B, earthmoving shell, for mounting to quick coupler SWA 33

| | | | | | |
|---------------|----------------|------|------|------|------|
| Cutting width | mm | 320 | 400 | 600 | 800 |
| Capacity | m ³ | 0.17 | 0.22 | 0.30 | 0.40 |
| Weight | kg | 750 | 840 | 780 | 830 |



Sorting grab

perforated

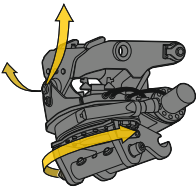
closed

SG 20B, for mounting to quick coupler SWA 33

| | | | | | | | | | |
|---------------|----------------|------|-------|-------|-------|------|-------|-------|-------|
| Cutting width | mm | 800 | 1,000 | 1,200 | 1,400 | 800 | 1,000 | 1,200 | 1,400 |
| Capacity | m ³ | 0.40 | 0.50 | 0.60 | 0.70 | 0.40 | 0.50 | 0.60 | 0.70 |
| Weight | kg | 750 | 795 | 840 | 990 | 765 | 810 | 850 | 1,010 |

SG 20B, for mounting to quick coupler SWA 48

| | | | | | | | | | |
|---------------|----------------|------|-------|-------|-------|------|-------|-------|-------|
| Cutting width | mm | 800 | 1,000 | 1,200 | 1,400 | 800 | 1,000 | 1,200 | 1,400 |
| Capacity | m ³ | 0.40 | 0.50 | 0.60 | 0.70 | 0.40 | 0.50 | 0.60 | 0.70 |
| Weight | kg | 750 | 795 | 840 | 990 | 765 | 810 | 850 | 1,010 |



Tiltrotator

LH-TR 20, for mounting to quick coupler SWA 33

| | | |
|----------|----|---------|
| Weight | kg | 470 |
| Rotation | | 360° |
| Tilt | | 2 x 50° |

LH-TR 20, for mounting to quick coupler SWA 48

| | | |
|----------|----|---------|
| Weight | kg | 470 |
| Rotation | | 360° |
| Tilt | | 2 x 50° |

Serial equipment

Undercarriage

Lashing eyes
Sprocket double-toothed
Track and carrier rollers, sealed and lifetime-lubricated
Undercarriage S

Uppercarriage

Centralised lubrication system (automatic)
Engine hood with gas spring opening
Filters accessible from ground level
Front right rearview mirrors
Hydraulic oil level, visible from ground level
Lockable fuel tank cap
Lockable service doors
Main switch, manual, lockable
Protection grid on radiator fan
Sound insulation
Swing drive gearbox oil level, visible from the cab
Swing-out fan
Windshield washer fluid tank

Hydraulic system

Filter with integrated fine filters
Hydraulic pressure measuring ports
Hydraulic tank shut-off valve
Liebherr Synchron Comfort System (LSC)
Magnetic rod
Pressure accumulator for controlled lowering of equipment with engine turned off

Engine

Air filter with automatic dust ejector
Automatic engine idling / speed increase, controlled via joystick sensors
Common-Rail injection system
Exhaust gas after-treatment system – DOC + DPF + SCR
Fixed geometry turbocharger
Fuel fine filter
Fuel pre-filter and water separator
Fuel priming pump
Intercooler
Power Pack EU Stage V
Stepless adjustable engine speed

Cab

7" multifunction colour touchscreen
Air conditioning, automatic, tri-zone, controlled via display
Armrests adjustable in width, height and inclination
Bottle holder
Cab air filters housing, accessible from ground level
Cab door sliding windows
Coat hook
DEF consumption on touchscreen
DEF level on touchscreen
Electric socket in cabin (12 V)
Electric socket in cabin (24 V)
Emergency hammer
Fuel consumption on touchscreen
Fuel level on touchscreen
Impact resistant roof window
Interior lighting
Laminated right hand side window
LiDAT Plus (Liebherr data transfer system)*
Mechanical hour meters, visible from ground level
Rain hood over front window opening
Rearview mirror
Rear view monitoring camera
Rear window emergency exit
Roll-down sun blinds for windscreen and roof window
ROPS safety cab structure (ISO 12117-2)
Rubber floor mat, fixed on floor and removable
Shortcut button on joystick configurable
Storage nets
Storage spaces
Tilttable console left
Tinted windows
Visco-elastic damping
Windscreen wiper and washer
Work mode selector

Equipment

Boom cylinders regeneration
Pipe fracture safety valve for stick cylinder
Pipe fracture safety valves for boom cylinders
SAE split flanges on high pressure lines
Stick cylinder regeneration

* optionally extendable after one year

Equipment standard / option

Undercarriage

| | |
|--|---|
| Chain guide 1 piece | • |
| Chain guide 3 pieces | + |
| Dozer and stabilizer blade 2,500 mm | + |
| Dozer and stabilizer blade 2,600 mm | + |
| Dozer and stabilizer blade 2,700 mm | + |
| Rubber track pads 500 mm | + |
| Special painting | + |
| Steps | + |
| Steps wide | • |
| Track pads triple grouser 500 / 700 / 900 mm | + |
| Track pads triple grouser 600 mm | • |
| Tracks, sealed and greased, with track pads | • |
| Undercarriage storage compartment | + |

Uppercarriage

| | |
|---|-----|
| Air pre-filter with cyclonical dust trap | + |
| Counterweight standard 2.8 t | • |
| Electric socket on uppercarriage (24 V) | + |
| Extended tool set including tool box | + |
| Flashing beacon on uppercarriage, rear, LED, 1 piece | + |
| Fuel anti-theft protection | + |
| Headlight on uppercarriage, lateral right, LED+, 1 piece | +1) |
| Headlights on uppercarriage, front, halogen, 2 pieces, protections included | •1) |
| Headlights on uppercarriage, front, LED+, 2 pieces, protections included | +1) |
| Headlights on uppercarriage, rear, LED+, 2 pieces | +1) |
| Pre-heating system for fuel | + |
| Reflective warning stickers | + |
| Reversible fan drive | + |
| Special painting | + |
| Tank refilling pump fuel | + |
| Tool set including storage case | • |

Hydraulic system

| | |
|--|---|
| Bypass filter for hydraulic oil | + |
| Liebherr hydraulic oil | • |
| Liebherr hydraulic oil, adapted for extreme climate conditions | + |
| Liebherr hydraulic oil, biodegradable | + |

Engine

| | |
|--|---|
| Automatic engine shutdown after idling | + |
|--|---|

Equipment standard / option

Cab

| | |
|--|-----------------|
| 2" seat belt with retractor | ● |
| 3" seat belt with retractor, orange colour | + |
| 4-points seat belt | + |
| Acoustic travel alarm deactivatable | + |
| Attachment continuous operation system | + |
| Auxiliary heater programmable | + |
| Bottom windscreen wiper | + |
| Cool box (12 V) | + |
| Dark tinted windows | + |
| Emergency stop in cab | + |
| FGPS front guard | + |
| FGPS front guard tiltable | + |
| Filter for hydraulic hammer return flow | + |
| Fire extinguisher | + |
| First-aid box | + |
| Flashing beacon on cabin, LED, 1 piece | + |
| Footrest | + |
| FOPS top guard | + |
| Handrests elevated for joysticks | + |
| Headlights on cab, front, halogen, 2 pieces | ● ¹⁾ |
| Headlights on cab, front, LED+, 2 pieces | + ¹⁾ |
| Headlights on cab roof, front, LED+, 2 pieces | + ¹⁾ |
| High pressure circuit switchable on pedals or mini-joystick | + |
| High pressure circuit with Tool Control (20 attachment adjustments on display) | + |
| Impact resistant one-piece windscreen | + |
| Keyed immobiliser | + |
| Lightbar on cabin | + |
| Medium pressure circuit | + |
| Mini-joysticks proportional | ● |
| Movement restriction for stick | + |
| Operator seat Comfort | + |
| Operator seat Premium | + |
| Operator seat Standard | ● |
| Overload warning system | + |
| Preparation for machine guidance system | + |
| Radio Comfort | + |
| Radio pre-installation | ● |
| Retractable laminated two-piece windscreen | ● |
| Right hand side view monitoring camera | ● |
| Roof sun shield | + |
| Roof window wiper | + |
| Special painting | + |
| Sun visor | + |
| SuperFinish | + |
| Switch between high pressure and bucket cylinder controls | + |
| Windscreen bottom protection grid | + |

Equipment

| | |
|---|-----------------|
| Bucket cylinder rod protection | + |
| Centralised lubrication extended for connecting link | + |
| Centralised lubrication extended for quick coupler | + |
| Grapple hydraulic lines (bucket cylinder inactive) | + |
| Headlight guards on boom | + |
| Headlights on boom, halogen, 2 pieces | ● ¹⁾ |
| Headlights on boom, LED+, 2 pieces | + ¹⁾ |
| Headlights on stick, right and left, LED+, 2 pieces, protections included | + ¹⁾ |
| Leak oil line for attachment | + |
| Liebherr bucket range | + |
| Liebherr tooth system | + |
| Lifting eye on stick | + |
| LIKUFIX electric signal plug for quick coupler SWA 48 | + |
| LIKUFIX for quick coupler SWA 33 hydraulic | + |
| LIKUFIX for quick coupler SWA 48 hydraulic | + |
| Load holding valve for bucket cylinder | + |
| Mono boom 4.60 m | + |
| Mono boom offset 4.30 m | + |
| Quick coupler SWA 33 hydraulic | + |
| Quick coupler SWA 33 mechanical | + |
| Quick coupler SWA 48 hydraulic | + |
| Quick coupler SWA 48 mechanical | + |
| Security for hoist cylinders | + |
| Special painting | + |
| Stick 2.05 m | + |
| Stick 2.25 m | + |
| Stick 2.45 m | + |
| Stick 2.65 m | + |
| Stick bottom protection | + |
| Tool Management | + |
| Two-piece boom 4.85 m | + |
| Two-piece boom offset 4.90 m | + |

● = Standard, + = Option

¹⁾ Equipment not individually available, but only as predefined packages

Non-exhaustive list, please contact us for further information.

Options and /or special equipment, supplied by vendors other than Liebherr, are only to be installed with the knowledge and approval of Liebherr in order to retain warranty.

Liebherr-France SAS

2 avenue Joseph Rey, B.P. 90287 • 68005 Colmar Cedex, France • Phone +33 389 213030
info.lfr@liebherr.com • www.liebherr.com • www.facebook.com/LiebherrConstruction